

1  
E101  
CAMPUS MAP  
SCALE: NTS

### ELECTRICAL GENERAL NOTES

- CONTRACTOR SHALL VISIT THE SITE TO VERIFY THE SCOPE OF WORK & EXISTING CONDITIONS. CONTRACTOR SHALL ALSO EXAMINE ALL EXISTING CONDITIONS WHICH AFFECT THE WORK, PRIOR TO SUBMITTING TENDER PRICE. NO EXTRAS WILL BE ALLOWED FOR FAILURE TO DO SO.
- VERIFY FIELD MEASUREMENTS AND CIRCUITING ARRANGEMENTS ARE AS SHOWN ON DRAWINGS.
- VERIFY THAT ABANDONED WIRING AND EQUIPMENT SERVE ONLY ABANDONED FACILITIES.
- DEMOLITION DRAWINGS ARE BASED ON CASUAL FIELD OBSERVATION. REPORT DISCREPANCIES TO UNIVERSITY OF TORONTO BEFORE DISTURBING EXISTING INSTALLATION.
- SCHEDULE & COORDINATE ALL WORK WITH U OF T STAFF AND OTHER TRADES ON SITE.
- ANY INTERRUPTIONS TO POWER SUPPLY TO EXISTING LIGHTING OR DEVICES SHALL BE COORDINATED ON SITE. REFER TO ARCHITECTURAL & MECHANICAL DRAWINGS FOR FULL SCOPE OF WORK.
- DISCONNECT ELECTRICAL SYSTEMS IN WALLS, FLOORS, AND CEILINGS SCHEDULED FOR REMOVAL.
- THE CONTRACTOR TO ENSURE CONTINUITY OF SYSTEMS THROUGH RENOVATION SPACE
- MODIFY/EXTEND/REPLACE EXISTING CONDUITS/WIRING/BACKBOXES AS REQUIRED FOR THE RELOCATED AND EXISTING TO REMAIN EQUIPMENT/DEVICES FOR FULLY OPERATIONAL SYSTEM.
- PROVIDE BLANK STAINLESS STEEL COVER PLATES WHERE OUTLETS ARE REMOVED FROM EXISTING WALLS TO REMAIN.
- REROUTE AS REQUIRED TO MAINTAIN CONTINUITY FOR ALL SYSTEMS TO REMAIN WHICH ARE AFFECTED BY THE DEMOLITION OR ALTERATION.
- REMOVE ABANDONED WIRING TO SOURCE OF SUPPLY.
- PROVIDE TEMPORARY WIRING AND CONNECTIONS TO MAINTAIN EXISTING SYSTEMS IN SERVICE DURING CONSTRUCTION. WHEN WORK MUST BE PERFORMED ON ENERGIZED EQUIPMENT OR CIRCUITS, USE PERSONNEL EXPERIENCED IN SUCH OPERATIONS.
- EXISTING ELECTRICAL SERVICE: MAINTAIN EXISTING SYSTEM UNTIL NEW SYSTEM IS COMPLETE AND READY FOR SERVICE. DISABLE SYSTEM ONLY TO MAKE SWITCHOVERS AND CONNECTIONS. FOLLOW UNIVERSITY OF TORONTO PROCEDURES FOR SCHEDULING SHUTDOWNS. MINIMIZE OUTAGE DURATION.
- REMOVE EXPOSED ABANDONED CONDUIT, INCLUDING ABANDONED CONDUIT ABOVE ACCESSIBLE CEILING SPACE. CUT CONDUIT FLUSH WITH WALLS AND FLOORS, AND PATCH SURFACES AS REQUIRED.
- DISCONNECT AND REMOVE ABANDONED PANELBOARDS AND DISTRIBUTION EQUIPMENT, WHERE INDICATED.
- DISCONNECT AND REMOVE ELECTRICAL DEVICES AND EQUIPMENT SERVING UTILIZATION EQUIPMENT THAT HAS BEEN REMOVED.
- DISCONNECT AND REMOVE ABANDONED LUMINAIRES. REMOVE BRACKETS, STEMS, HANGERS, AND OTHER ACCESSORIES. RECYCLE ALL ELEMENTS WHERE POSSIBLE. DISPOSE OF HAZARDOUS MATERIALS AT APPROPRIATE FACILITIES.
- REPAIR ADJACENT CONSTRUCTION AND FINISHES DAMAGED DURING DEMOLITION AND EXTENSION WORK.
- MAINTAIN ACCESS TO EXISTING ELECTRICAL INSTALLATIONS WHICH REMAIN ACTIVE. MODIFY INSTALLATION OR PROVIDE ACCESS PANEL AS APPROPRIATE.
- EXTEND EXISTING INSTALLATIONS USING MATERIALS AND METHODS COMPATIBLE WITH EXISTING ELECTRICAL INSTALLATIONS, OR AS SPECIFIED.
- CLEAN AND REPAIR EXISTING MATERIALS AND EQUIPMENT WHICH REMAIN OR ARE TO BE REUSED.
- DISCONNECT & REMOVE EXISTING LIGHTING FIXTURES AND ASSOCIATED WIRING & CONDUIT BACK TO JUNCTION BOX/SOURCE AS INDICATED.
- DISCONNECT & REMOVE EXISTING DATA & TELEPHONE OUTLETS AND ASSOCIATED CABLING BACK TO RESPECTIVE DATA RACK AND TELEPHONE BACKBOARD AS INDICATED.
- DISCONNECT & REMOVE EXISTING POWER OUTLETS & DEVICES ALONG WITH ASSOCIATED OUTLETS, CONDUITS & WIRING BACK TO THE RESPECTIVE SOURCE OF ORIGIN AS REQUIRED.
- DISCONNECT & REMOVE ALL ABANDONED CONDUITS, CABLES & LOOSE BX WIRING AS REQUIRED, WHETHER SHOWN ON THIS DRAWING OR NOT. RE-SUPPORT/ARRANGE EXISTING WIRING IN CEILING SPACE TO SATISFY ESA INSPECTION AS REQUIRED.
- PROVIDE FIRESTOPPING AT ALL ELECTRICAL PENETRATIONS THROUGH FIRE SEPARATIONS AS REQUIRED TO MAINTAIN THE INTEGRITY OF THE FIRE SEPARATION. REFER TO ARCHITECTURAL DRAWINGS FOR FIRE SEPARATION LOCATIONS AND FIRE RESISTANCE RATING REQUIREMENTS.
- ALL NEW ELECTRICAL INSTALLATIONS ARE TO BE SURFACE MOUNTED WITH WIREMOLD, UNLESS NOTED OTHERWISE.
- CONTRACTOR SHALL PERFORM VOLTAGE DROP CALCULATIONS FOR ALL BRANCH CIRCUITS (LIGHTING AS WELL AS POWER) AND SHALL MAINTAIN VOLTAGE DROP WITHIN PERMISSIBLE LIMITS AS PER O.E.S.C. REQUIREMENTS AND PROVIDE PROPER WIRE SIZES, ACCORDINGLY. PRIOR TO COMMENCING OF ROUGH-IN INSTALLATION. THE VOLTAGE DROP CALCULATIONS SHALL BE BASED ON MAXIMUM CIRCUIT AMPACITY.
- ALL RECEPTACLES SHALL BE IDENTIFIED USING PROFESSIONAL GRADE, HIGH GLOSS LABELS INDICATING CIRCUIT NUMBER & PANEL SOURCE.
- PROVIDE UPDATED AND NEW 'TYPED' PANEL DIRECTORY CARD FOR EXISTING & NEW PANELS IN THE AREA OF WORK AS REQUIRED.

### DIVISION OF RESPONSIBILITY - DEMOLITION

CATEGORY	DESCRIPTION	MECHANICAL	ELECTRICAL
WIRING, BACK-BOXES & CONDUITS	LINE VOLTAGE POWER WIRING AND ASSOCIATED BACK-BOXES & CONDUITS		•
	LINE & LOW VOLTAGE CONTROL WIRING AND ASSOCIATED BACK-BOXES & CONDUITS	•	
EQUIPMENT & DEVICES	DISCONNECT SWITCHES, VFDS, STARTERS & LINE VOLTAGE CONTROL DEVICES		•
	LOW VOLTAGE CONTROL DEVICES	•	
COMMUNICATIONS	HEAT TRACING, SNOWMELT SYSTEMS, ELECTRIC COILS & PACKAGED ELECTRIC SPACE HEATING EQUIPMENT	•	
	BAS DATA CABLING, PATCH CABLING & ASSOCIATED CONDUITS FROM MECHANICAL EQUIPMENT CONTROLLER TO FACILITIES & SERVICES (F&S) NETWORK SWITCH	•	

### DIVISION OF RESPONSIBILITY - NEW WORK

CATEGORY	DESCRIPTION	MECHANICAL	ELECTRICAL
WIRING, BACK-BOXES & CONDUITS	LINE VOLTAGE POWER WIRING AND ASSOCIATED BACK-BOXES & CONDUITS		PROVIDE
	LINE & LOW VOLTAGE CONTROL WIRING AND ASSOCIATED BACK-BOXES & CONDUITS	PROVIDE	
	BACK-BOXES FOR STEP-DOWN TRANSFORMERS & RELAYS SERVING MECHANICAL EQUIPMENT	PROVIDE	
EQUIPMENT & DEVICES	VFDS, STARTERS, SPEED CONTROLLERS, & LINE VOLTAGE CONTROL DEVICES SERVING MECHANICAL EQUIPMENT	SUPPLY	INSTALL
	LOW VOLTAGE CONTROL DEVICES	PROVIDE	
	LOW VOLTAGE STEP-DOWN TRANSFORMERS & RELAYS SERVING MECHANICAL EQUIPMENT	SUPPLY	INSTALL
	HEAT TRACING, ELECTRIC COILS & PACKAGED ELECTRIC SPACE HEATING EQUIPMENT	PROVIDE	
COMMUNICATIONS	ELECTRIC SNOWMELT SYSTEMS		PROVIDE
	BAS DATA CABLING, PATCH CABLING & ASSOCIATED CONDUITS FROM MECHANICAL EQUIPMENT CONTROLLER TO FACILITIES & SERVICES (F&S) NETWORK SWITCH	PROVIDE	

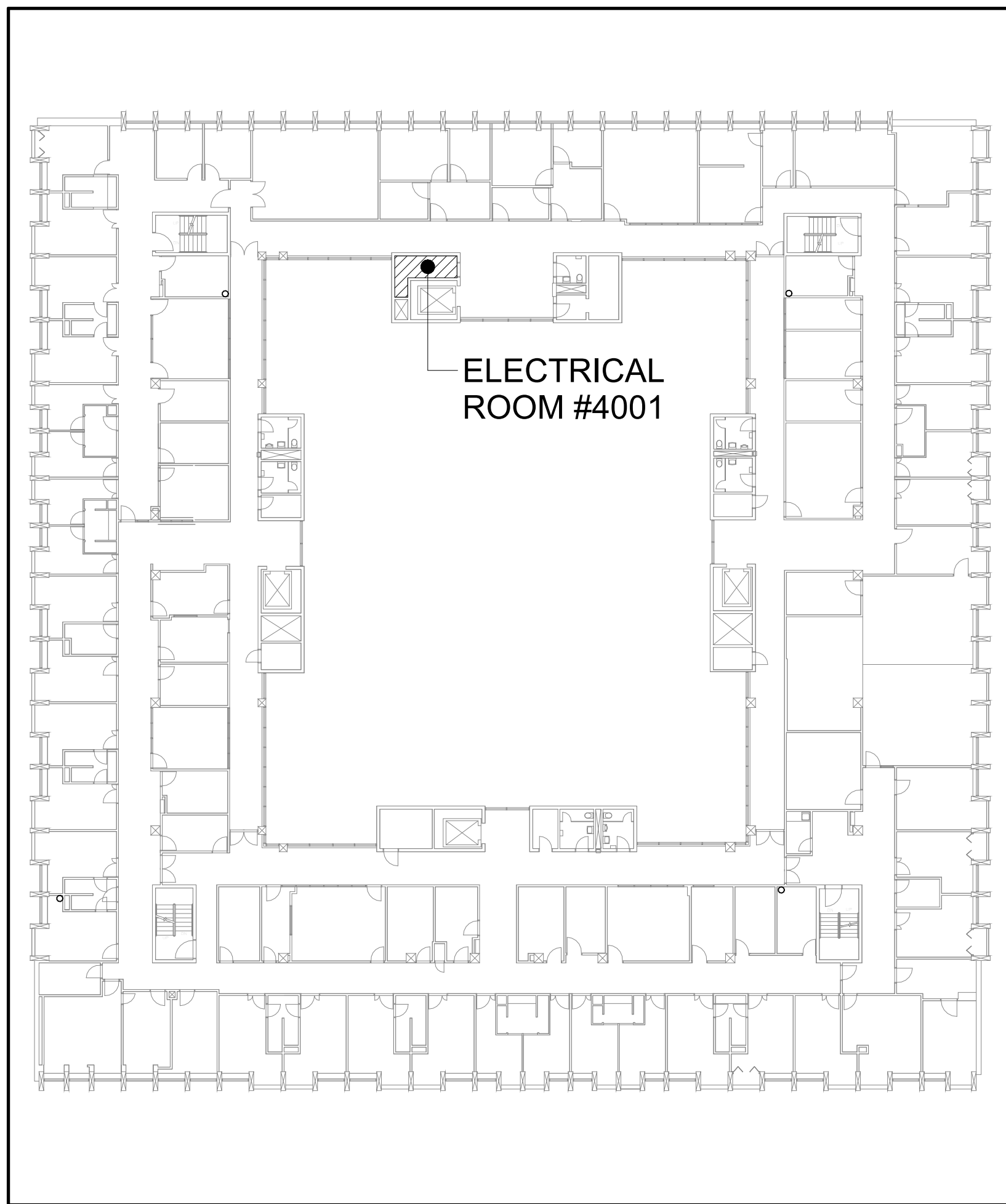
NOTES:  
1. LOW VOLTAGE IS DEFINED AS BELOW 30 VOLTS.  
2. ALL ELECTRICAL WORK INCLUDING CONTROLS WORK SHALL BE PERFORMED BY THE CONTRACTOR ON BEHALF OF THE OWNER THAT FALLS UNDER THE PROVISIONS OF ANY COLLECTIVE AGREEMENTS BY WHICH THE OWNER IS BOUND, OR WHICH THE OWNER IS CONTRACTUALLY REQUIRED TO APPLY TO THE PROJECT, SHALL IN EACH CASE BE PERFORMED BY EMPLOYEES COVERED BY THE APPLICABLE COLLECTIVE AGREEMENT. REFER TO SPECIFICATIONS SECTION 00 21 13 - INSTRUCTIONS TO BIDDERS, AND CDDC2 SUPPLEMENTARY CONDITIONS.

### ELECTRICAL DRAWING LIST

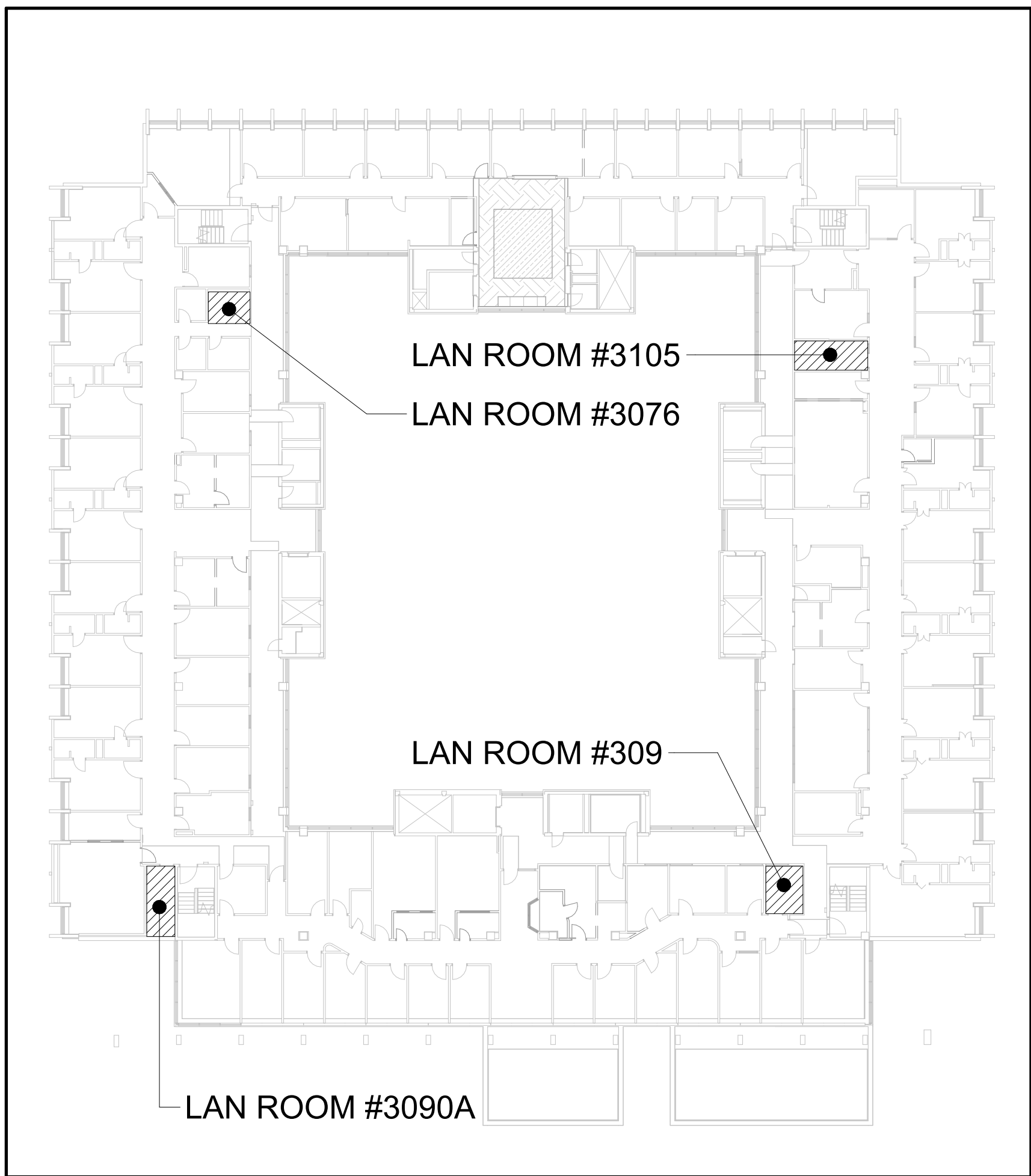
SHEET NUMBER	SHEET NAME
E101	ELECTRICAL LEGEND, DRAWING LIST, KEY PLANS & CAMPUS MAP
E102	ELECTRICAL & COMMUNICATIONS SPECIFICATION
E201	SECOND FLOOR PLAN - ELECTRICAL DEMOLITION LAYOUT
E202	THIRD FLOOR PLAN - ELECTRICAL DEMOLITION LAYOUT
E203	THIRD FLOOR PLAN - LIGHTING DEMOLITION LAYOUT
E301	SECOND FLOOR PLAN - NEW ELECTRICAL & LIGHTING LAYOUTS
E302	THIRD FLOOR PLAN - NEW ELECTRICAL LAYOUT
E303	THIRD FLOOR PLAN - NEW LIGHTING LAYOUT
E401	SINGLE LINE DIAGRAMS & PANEL SCHEDULES
E402	COMMUNICATION WIRING CONDUIT LAYOUT & ELECTRICAL DETAILS
E501	LIGHTING CONTROL DETAILS & LUMINAIRE SCHEDULE

### LEGEND OF SYMBOLS

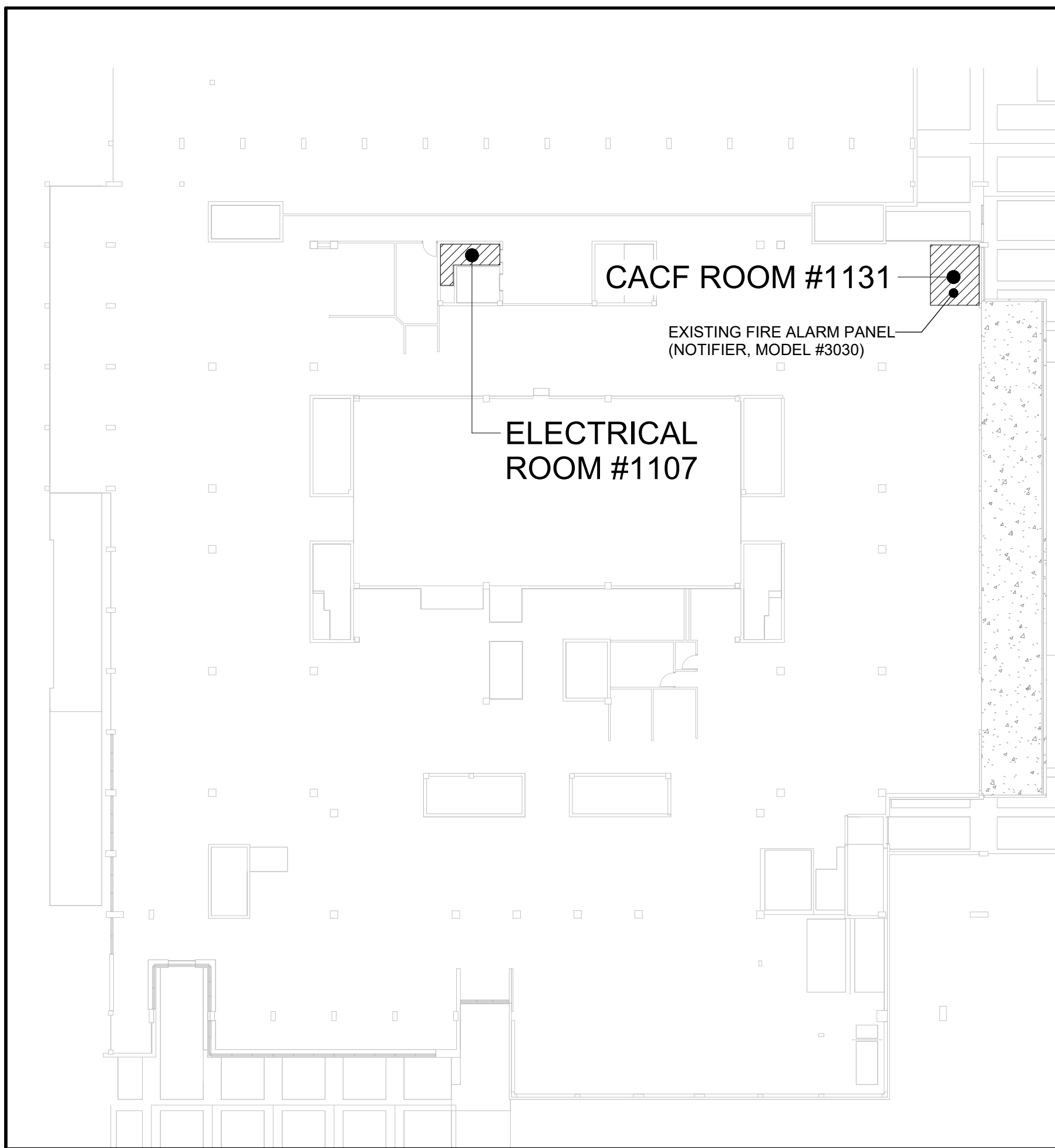
SYMBOL	DESCRIPTION
	EXISTING LIGHTING FIXTURE TO BE REMOVED.
	EXISTING LIGHTING FIXTURE TO BE RELOCATED.
	NEW LIGHTING FIXTURE. LETTER DESIGNATES FIXTURE TYPE. REFER TO DRAWING #E301 FOR FIXTURE SCHEDULE.
	LIGHTING FIXTURE WIRED ON EMERGENCY CIRCUIT.
	CEILING MOUNTED EXIT SIGN (GREEN PICTOGRAM TYPE) LUMACELL, LA SERIES, CAT. #LA-3-W-U OR APPROVED EQUAL.
	WALL MOUNTED EXIT SIGN (GREEN PICTOGRAM TYPE) LUMACELL, LA SERIES, CAT. #LA-3-W-U OR APPROVED EQUAL.
	LIGHT SWITCH
	TOGGLE DISCONNECT SWITCH
	WALL MOUNTED DUAL TECHNOLOGY OCCUPANCY SENSOR SWITCH
	LOW VOLTAGE LIGHT SWITCH
	CEILING MOUNTED OCCUPANCY SENSOR
	CEILING MOUNTED DAYLIGHT SENSOR
	CEILING MOUNTED LIGHTING CONTROL WIRELESS RECEIVER
	LIGHTING CONTROL POWER SUPPLY
	LIGHTING CONTROLLER / PANEL
	15A, 120V DUPLEX RECEPTACLE (5-15R)
	FLOOR MOUNTED 15A, 120V DUPLEX RECEPTACLE (5-15R)
	CEILING MOUNTED 15A, 120V DUPLEX RECEPTACLE (5-15R)
	15A, 120V SINGLE RECEPTACLE
	20A, 120V DUPLEX RECEPTACLE (5-20R)
	20A, 120V SINGLE LOCKING RECEPTACLE
	15A, 120V QUAD RECEPTACLE (DOUBLE 15A DUPLEX RECEPTACLES)
	20A, 120V QUAD RECEPTACLE (DOUBLE 20A DUPLEX RECEPTACLES)
	1P/2P DIRECT CONNECTION
	3P DIRECT CONNECTION
	ELECTRICAL PANEL
	JUNCTION BOX / PULL BOX
	FIRE ALARM SMOKE DETECTOR
	FIRE ALARM HEAT DETECTOR
	WALL-MOUNTED FIRE ALARM STROBE
	CEILING-MOUNTED FIRE ALARM SPEAKER
	CEILING-MOUNTED FIRE ALARM SPEAKER STROBE
	FIRE ALARM PULL STATION
	DATA OUTLET (# DENOTES DATA DROPS QUANTITY)
	FLOOR MOUNTED DATA OUTLET (# DENOTES DATA DROPS QUANTITY)
	CEILING MOUNTED DATA OUTLET (# DENOTES DATA DROPS QUANTITY)
	AUDIO/VIDEO OUTLET
	FLOOR MOUNTED AUDIO/VIDEO OUTLET
	TELEPHONE OUTLET
	WIRELESS ACCESS POINT (# DENOTES DATA DROPS QUANTITY)
	AUTOMATIC DOOR OPERATOR
	DOOR ACTIVATION DEVICE
	DOOR LOCK DEVICE
	ASSISTANCE REQUESTED / REQUIRED DEVICE
	EXISTING TO REMAIN
	EXISTING TO BE REMOVED
	EXISTING TO BE RELOCATED
	RELOCATED EXISTING DEVICES
	OVER COUNTER
	UNDER COUNTER
	HIGH LEVEL
	CEILING MOUNTED
	GROUND FAULT CIRCUIT INTERRUPTER (AS PER ESA)
	ABOVE FINISHED FLOOR



4  
E101  
KEY PLAN - FOURTH FLOOR  
SCALE: NTS



3  
E101  
KEY PLAN - THIRD FLOOR  
SCALE: NTS



2  
E101  
KEY PLAN - FIRST FLOOR  
SCALE: NTS



University of Toronto  
UNIVERSITY PLANNING,  
DESIGN & CONSTRUCTION

### Design & Engineering

255 McCaul Street, 4th Floor, Toronto, Ontario M5T 1W7

This drawing is the property of the University of Toronto, and must be returned upon completion of the work. All information shown on this drawing is for use on this specific project. Contractor must verify all dimensions on the job and report any discrepancies to the Architect before proceeding with the work.

ISSUED FOR TENDER	2016-04-22
ISSUED FOR 50% CD	2016-05-09
ISSUED FOR PERMIT	2016-05-27
ISSUED FOR CLASS A COSTING	2016-02-18
ISSUED FOR 100% CD	2016-01-23
ISSUED FOR CLASS B COSTING	2016-01-16
ISSUED FOR 50% ED	2015-11-28
ISSUED FOR 100% SCHEMATIC DESIGN	2015-09-19
ISSUED FOR CLASS C COSTING	2015-09-05

REV.	DESCRIPTION	DATE
------	-------------	------

KEY PLAN (NTS)	SEAL
----------------	------

PROJECT TITLE  
UNIVERSITY OF TORONTO  
**33 URSULA FRANKLIN  
MATH OFFICE  
RENOVATION**

33 Ursula Franklin Street  
DRAWING SHEET TITLE  
**ELECTRICAL LEGEND,  
DRAWING LIST, KEY  
PLANS & CAMPUS MAP**

DRAWN BY: GDP	SCALE: As Indicated
REVIEWED BY: JW	DATE CREATED: 2025-05-27

UNIVERSITY PROJECT NUMBER/NORTH POINT  
P164-24-165

DRAWING NUMBER <b>E101</b>	REV. NUMBER
-------------------------------	-------------



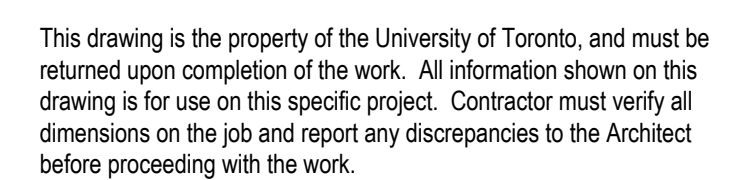
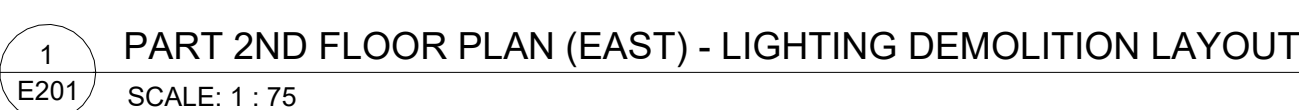
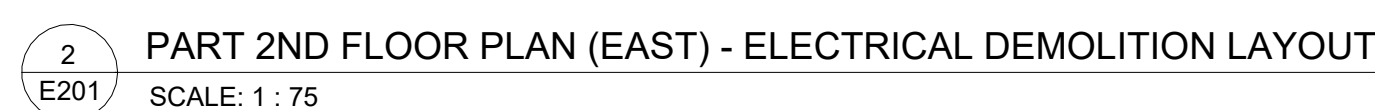




ELECTRICAL CONTRACTOR SHALL PROVIDE THE ITEM BELOW AS AN ALTERNATIVE PRICE:

- FOR THE ENTIRE RENOVATION AREA, ELECTRICAL CONTRACTOR TO REPLACE ALL PLUGS AND COVER PLATES OF ALL EXISTING RECEPTACLES TO REMAIN. REFER TO KEYED NOTE #1 ON THIS DRAWING.

- 1 FOR ALL RENOVATION AREA, REPLACE ALL EXISTING RECEPTACLES (PLUGS) THAT ARE TO REMAIN WITH NEW RECEPTACLES (PLUGS) AND STAINLESS STEEL COVERPLATES. EXISTING BACKBOXES AND WIRING TO REMAIN.
- 2 DISCONNECT & REMOVE EXISTING AV AND/OR DATA CABLEING BACK TO SOURCE. PROVIDE NEW STAINLESS STEEL BLANK COVERPLATES FOR REMOVED AV OR DATA OUTLETS.
- 3 DISCONNECT & REMOVE EXISTING LIGHTING FIXTURE AND LIGHTING CONTROL DEVICES C/W WIRING, CONDUIT AND BOX BACK TO SOURCE.
- 4 DISCONNECT & REMOVE EXISTING LIGHTING FIXTURE. UTILIZE EXISTING BRANCH WIRING TO FEED NEW LIGHTING FIXTURE ON THE NORMAL POWER CIRCUIT. REFER TO DRAWING E301 FOR NEW LAYOUT.
- 5 CAREFULLY DISCONNECT & REMOVE EXISTING LIGHTING FIXTURES, EXIT SIGNS AND FIRE ALARM SPEAKER IN THIS AREA. RE-INSTALL ALL EXISTING DEVICES AT THE SAME LOCATION SHOWN ON DRAWING #E301.
- 6 DISCONNECT & REMOVE EXISTING EXIT SIGN AND REMOVE WIRING AND CONDUIT BACK TO NEAREST JUNCTION BOX. UTILIZE EXISTING BRANCH WIRING TO FEED NEW EXIT SIGNS. REFER TO DRAWING E301 FOR NEW LAYOUT.
- 7 DISCONNECT & REMOVE EXISTING FIRE ALARM SPEAKERS AND REMOVE WIRING AND CONDUIT BACK TO NEAREST JUNCTION BOX. PROVIDE NEW FIRE ALARM SPEAKER WIRING FROM EXISTING FIRE ALARM JUNCTION BOX TO NEW FIRE ALARM SPEAKER AND SPEAKER/STROBE SHOWN ON THE NEW LAYOUT. PROVIDE FIRE ALARM VERIFICATION REPORT AS REQUIRED.
- 8 DISCONNECT & REMOVE EXISTING FIRE ALARM DETECTORS (HEAT AND SMOKE) AND REMOVE WIRING AND CONDUIT BACK TO NEAREST JUNCTION BOX. PROVIDE NEW FIRE ALARM WIRING FROM THE EXISTING FIRE ALARM JUNCTION BOX TO NEW DEVICES AS SHOWN IN DRAWING E301. PROVIDE FIRE ALARM VERIFICATION REPORT AS REQUIRED.
- 9 DISCONNECT & REMOVE EXISTING AUTOMATIC DOOR OPENER. UTILIZE EXISTING BRANCH WIRING TO FEED NEW AUTOMATIC DOOR OPENER. MODIFY/EXTEND EXISTING WIRING AS REQUIRED.



	ISSUED FOR TENDER	2026-04-22
	ISSUED FOR 80% CD	2026-03-09
	ISSUED FOR PERMIT	2026-02-27
	ISSUED FOR CLASS A COSTING	2026-02-18
	ISSUED FOR 100% DD	2026-01-23
	ISSUED FOR CLASS B COSTING	2026-01-16
	ISSUED FOR 50% DD	2025-11-28
	ISSUED FOR 100% SCHEMATIC DESIGN	2025-09-19
	ISSUED FOR CLASS C COSTING	2025-09-05
<b>REV.</b>	<b>DESCRIPTION</b>	<b>DATE</b>

KEY PLAN (NTS)	SEAL
----------------	------

KEY PLAN (NTS)	SEAL
----------------	------

PROJECT TITLE:  
UNIVERSITY OF TORONTO  
**33 URSULA FRANKLIN  
MATH OFFICE  
RENOVATION**

33 Ursula Franklin Street

---

DRAWING SHEET TITLE

**SECOND FLOOR PLAN -  
ELECTRICAL  
DEMOLITION LAYOUT**

DRAWN BY: GDP	SCALE: As indicated
REVIEWED BY: JW	DATE CREATED: 2025-05-27

UNIVERSITY PROJECT NUMBER	NORTH POINT
---------------------------	-------------

P164-24-165 

DRAWING NUMBER	REV. NUMBER
<b>E201</b>	



255 McCaul Street, 4th Floor, Toronto, Ontario M5T 1W7

This drawing is the property of the University of Toronto, and must be returned upon completion of the work. All information shown on this drawing is for use on this specific project. Contractor must verify all dimensions on the job and report any discrepancies to the Architect before proceeding with the work.



ISSUED FOR TENDER	2076-04-02
ISSUED FOR 80% CD	2076-03-09
ISSUED FOR PERMIT	2076-02-27
ISSUED FOR CLASS A COSTING	2076-02-18
ISSUED FOR 100% DD	2076-01-23
ISSUED FOR CLASS B COSTING	2076-01-16
ISSUED FOR 50% DD	2075-11-28
ISSUED FOR 100% SCHEMATIC DESIGN	2075-09-19
ISSUED FOR CLASS C COSTING	2075-09-06
<b>REV.</b>	<b>DATE</b>

KEY PLAN (NTS)	SEAL
----------------	------

PROJECT TITLE:  
UNIVERSITY OF TORONTO  
**33 URSULA FRANKLIN  
MATH OFFICE  
RENOVATION**

33 Ursula Franklin Street

---

DRAWING SHEET TITLE

**THIRD FLOOR PLAN -  
ELECTRICAL  
DEMOLITION LAYOUT**

DRAWN BY: GDP

REVIEWED BY: JW	DATE CREATED: 2025-05-27
-----------------	--------------------------

UNIVERSITY PROJECT NUMBER NORTH POINT

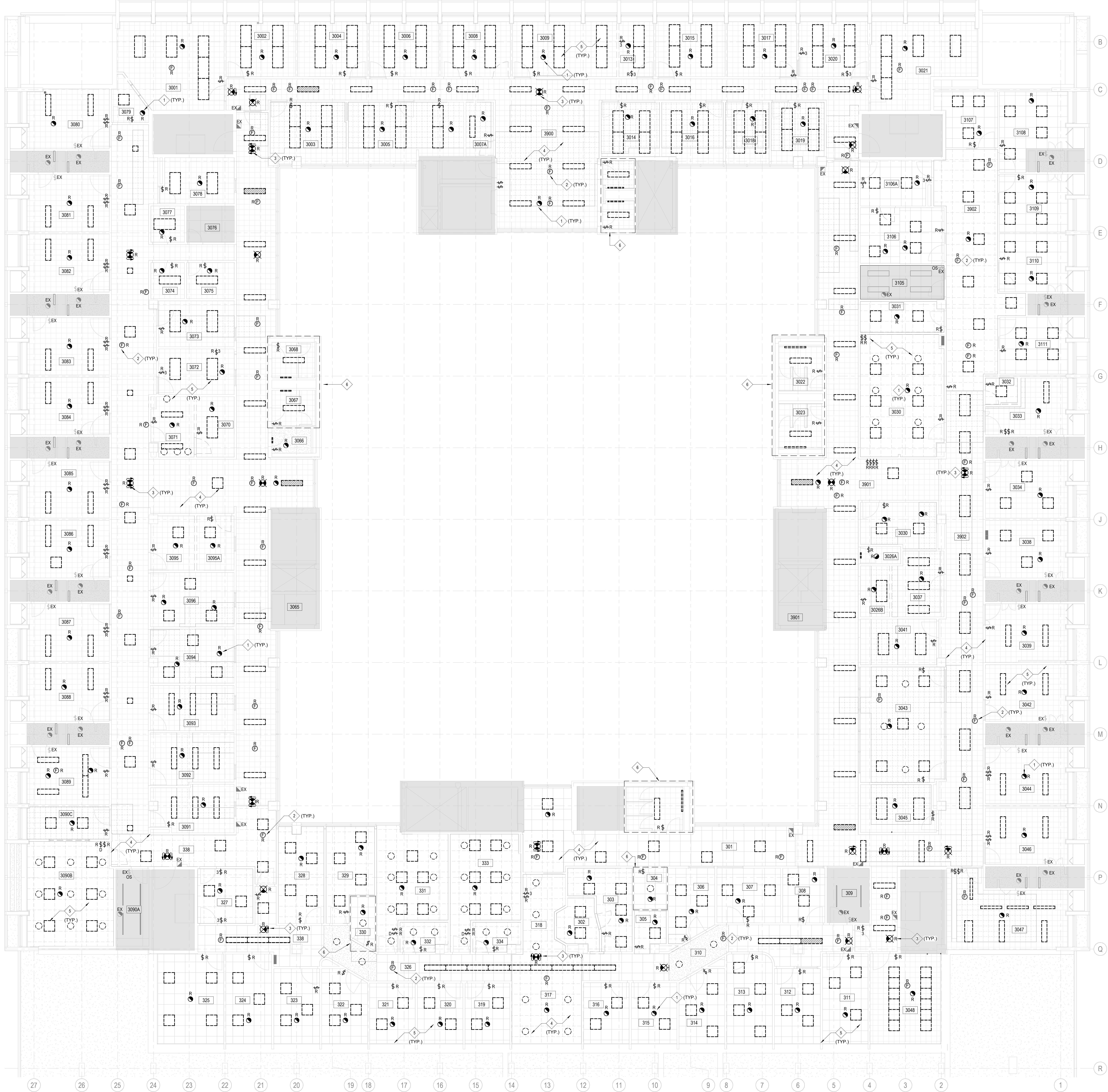
P164-24-165

DRAWING NUMBER	REV. NUMBER
----------------	-------------

E202



- DEMOLITION KEYED NOTES**
- 1 FOR ALL RENOVATION AREA, DISCONNECT & REMOVE EXISTING FIRE ALARM DETECTORS (HEAT AND SMOKE). INSTALL NEW FIRE ALARM DETECTORS IN THE SAME LOCATION WHERE POSSIBLE. UTILIZE EXISTING FIRE ALARM WIRING TO SUIT. PROVIDE FIRE ALARM VERIFICATION REPORT AS REQUIRED.
  - 2 FOR ALL RENOVATION AREA, DISCONNECT & REMOVE EXISTING FIRE ALARM SPEAKERS. RE-USE EXISTING WIRING FOR NEW FIRE ALARM SPEAKER AND SPEAKERSTORE SHOWN ON THE NEW LAYOUT. PROVIDE FIRE ALARM VERIFICATION REPORT AS REQUIRED.
  - 3 FOR ALL RENOVATION AREA, DISCONNECT & REMOVE EXISTING EXIT SIGNS. MODIFY AND/OR EXTEND EXISTING BRNACH WIRING FOR NEW GREEN RUNNING MAN EXIT SIGNS AS REQUIRED. REFER TO DRAWING #E302 FOR NEW LAYOUT.
  - 4 DISCONNECT & REMOVE EXISTING FIXTURES AND LIGHTING CONTROL DEVICES C/W BACKBOX, WIRING AND CONDUIT IN CORRIDORS BACK TO SOURCE. NEW LIGHTING FIXTURES ON NORMAL POWER CIRCUITS IN CORRIDORS TO BE FED FROM NEW PANEL AS INDICATED. NEW LIGHTING FIXTURES ON EMERGENCY CIRCUIT IN CORRIDORS TO BE FED FROM EXISTING EMERGENCY CIRCUIT(S) WITH SPARE CAPACITY. MODIFY AND EXTEND EXISTING EMERGENCY BRANCH WIRING AS REQUIRED. REFER TO DRAWING #E302 FOR NEW LAYOUT.
  - 5 FOR ALL RENOVATION AREA, DISCONNECT & REMOVE EXISTING LIGHTING FIXTURES AND LIGHTING CONTROL DEVICES IN ALL ENCLOSED OFFICES/ROOMS. MODIFY AND/OR EXTEND EXISTING BRANCH WIRING FOR NEW LIGHTING FIXTURES AND SWITCHES AS REQUIRED. UTILIZED EXISTING LIGHT SWITCH BACKBOX AND WIRING WHERE POSSIBLE. REFER TO DRAWING #E302 FOR NEW LAYOUT.
  - 6 DISCONNECT & REMOVE EXISTING LIGHTING FIXTURES AND LIGHTING CONTROL DEVICES C/W BACKBOX, WIRING AND CONDUIT IN WASHROOMS BACK TO SOURCE. NEW LIGHTING FIXTURES IN WASHROOMS TO BE FED FROM EXISTING EMERGENCY LIGHTING CIRCUIT WITH SPARE CAPACITY. REFER TO DRAWING #E302 FOR NEW LAYOUT.



3RD FLOOR PLAN - LIGHTING DEMOLITION LAYOUT  
SCALE: 1:75



University of Toronto  
UNIVERSITY PLANNING,  
DESIGN & CONSTRUCTION

Design & Engineering

255 McCaul Street, 4th Floor, Toronto, Ontario M5T 1W7

This drawing is the property of the University of Toronto, and must be returned upon completion of the work. All information shown on this drawing is for use on this specific project. Contractor must verify all dimensions on the job and report any discrepancies to the Architect before proceeding with the work.

ISSUED FOR TENDER	2016-04-22
ISSUED FOR RFP	2016-05-09
ISSUED FOR PRINT	2016-05-27
ISSUED FOR CLASS A COSTING	2016-02-18
ISSUED FOR 10% R.O.	2016-01-23
ISSUED FOR CLASS B COSTING	2016-01-16
ISSUED FOR 50% R.O.	2015-11-28
ISSUED FOR 10% SCHEMATIC DESIGN	2015-09-19
ISSUED FOR CLASS C COSTING	2015-09-05

REV.	DESCRIPTION	DATE
------	-------------	------

KEY PLAN (NTS) SEAL

PROJECT TITLE  
UNIVERSITY OF TORONTO  
**33 URSULA FRANKLIN  
MATH OFFICE  
RENOVATION**

33 Ursula Franklin Street  
DRAWING SHEET TITLE  
**THIRD FLOOR PLAN -  
LIGHTING DEMOLITION  
LAYOUT**

DRAWN BY: GDP SCALE: 1:75  
REVIEWED BY: JW DATE CREATED: 2025-05-27

UNIVERSITY PROJECT NUMBER: NORTH POINT

P164-24-165

DRAWING NUMBER  
**E203**

REV. NUMBER





## NEW GENERAL NOTES

- NEW AND/OR RELOCATED LIGHTING FIXTURES SHALL BE INDEPENDENTLY SUPPORTED BY BUILDING STRUCTURE.
- FOR ALL NEW AND/OR RELOCATED CONDUITS WHICH PASS THROUGH FIRE RATED ASSEMBLIES, ELECTRICAL CONTRACTOR SHALL FILL OPENINGS WITH GUL LISTED AND APPROVED WATERPROOF AND FIREPROOF FILLER MATERIALS TO MAINTAIN EXISTING FIRE RATING.
- ELECTRICAL CONTRACTOR SHALL INCLUDE IN THE TENDER PRICE FOR THE SUPPLY, INSTALLATION OF FOUR (4) EXIT SIGNS IF REQUIRED BY THE INSPECTOR ON FINAL INSPECTION.**
- ELECTRICAL CONTRACTOR SHALL ACCOMPANY FIRE ALARM CONTRACTOR DURING THE FIRE ALARM TEST TO ADJUST FIRE ALARM SPEAKER WATTAGE AS REQUIRED TO MEET THE O.B.C. REQUIREMENTS.
- ELECTRICAL CONTRACTOR SHALL INCLUDE IN THE TENDER PRICE FOR THE SUPPLY, INSTALLATION AND VERIFICATION OF THREE (3) FIRE ALARM SPEAKER STROBE IF REQUIRED BY THE FIRE MARSHAL ON FINAL INSPECTION AND/OR AFTER THE FIRE ALARM AUDIBILITY TESTING.**
- ALL NEW RECEPTACLES AND COMMUNICATION OUTLETS SHALL BE RECESSED UNLESS OTHERWISE NOTED.
- THE GENERAL CONTRACTOR IS CARRYING THE AV DESIGN & BUILD AS PART OF THEIR SCOPE. THE COST FOR ADDITIONAL RECEPTACLES & DATA OUTLETS SHALL BE CARRIED BY THE GENERAL CONTRACTOR.
- ALL COMMUNICATION CABLEING ON 2ND FLOOR RENOVATION AREA SHALL BE TERMINATED IN LAN ROOM #315 ON 3RD FLOOR.**

## NEW KEYED NOTES

- PROVIDE TYPE 'WM1' SURFACE-MOUNTED WIREMOLD RACEWAY, 1-GANG OUTLET BOX & ACCESSORIES FOR INDICATED RECEPTACLE. RUN THE WIREMOLD TO ACCESSIBLE CEILING SPACE VIA THE NEAREST FULL-HEIGHT PARTITION. REFER TO WIREMOLD TYPE SCHEDULE ON THIS DRAWING.
- PROVIDE NEW FIRE ALARM BOOSTER PANEL, C/W BATTERY TO ALLOW NEW STROBE CIRCUITS FOR THE RENOVATION AREA. RUN NEW CONDUIT BETWEEN THE BOOSTER PANEL AND MAIN FIRE ALARM PANEL IN CAFÉ ROOM #131. PROVIDE ALL NECESSARY ACCESSORIES TO ENSURE A COMPLETE INSTALLATION.
- RECEPTACLES AND DATA OUTLETS SHOWN ON HIGHLIGHTED AREA FOR AV SYSTEM. THE ELECTRICAL CONTRACTOR SHALL CONFIRM RECEPTACLE AND DATA OUTLET LOCATIONS WITH THE GENERAL CONTRACTOR PRIOR TO ROUGH-INS.
- PROVIDE POWER CONNECTIONS TO INDICATED MECHANICAL UNIT WITH NEW LOCAL DISCONNECT SWITCH, WIRING AND CONDUIT. COORDINATE WITH MECHANICAL ON SITE PRIOR TO ROUGH-INS.
- CONNECT NEW EXIT SIGNS TO NEAREST EXISTING EMERGENCY LIGHTING CIRCUIT WITH SPARE CAPACITY TO SUIT. MODIFY AND/OR EXTEND EXISTING BRANCH WIRING AS REQUIRED. ENSURE CIRCUIT NOT TO BE OVERLOADED.
- ALL TYPE 'D1' DOWNLIGHTS EXCLUDING EMERGENCY LIGHTS AND DOWNLIGHTS IN LIGHTING CONTROL ZONE 'Z3A' IN ROOM #202 SHALL BE LIGHTING CONTROL ZONE 'Z3B'.
- CONNECT INDICATED LIGHTING FIXTURE TO NEAREST EXISTING 120V EMERGENCY LIGHTING CIRCUIT WITH SPARE CAPACITY TO SUIT.
- PROVIDE CEILING-MOUNTED DUAL TECHNOLOGY OCCUPANCY SENSOR AS SPECIFIED. MODIFY EXISTING LIGHTING CIRCUIT IN THIS WASHROOM TO ENSURE NORMAL LIGHTING CIRCUIT TO BE CONTROLLED BY THIS SENSOR.
- PROVIDE NEW FIRE ALARM STROBE CIRCUIT(S) FROM NEW FIRE ALARM BOOSTER PANEL TO FIRE ALARM STROBES AND FIRE ALARM SPEAKER STROBES IN RENOVATION AREA. PROVIDE ALL NECESSARY ACCESSORIES TO ENSURE A COMPLETE FUNCTIONAL INSTALLATION.
- PROVIDE WEATHERPROOF 20A, 120V, GFI DUPLEX RECEPTACLE C/W 1-GANG EXTRA-DUTY METALLIC WHILE-IN-USE WEATHERPROOF COVER (HUBBELL, CAT. #WP8EH) FOR HORIZONTAL MOUNTING AT 750mm ABOVE FLOOR LEVEL. PROVIDE MOUNTING SUPPORT AS REQUIRED AND COORDINATE WITH GENERAL TRADE.

## LIGHTING ZONE CIRCUITS - 2ND FLOOR

RM No.	SWITCH No.	LTG ZONE	WATTAGE	CIRCUIT No.	LPD (W/m2)	SB-10 LPD (W/m2)
2902A	N/A	N/A	42	NRP0202NA-6	7.69	6.8
2902B	N/A	N/A	31	NRP0202NA-6	11.97	4.6
2902	S3A	Z3A	308	NRP0202NA-4	6.12	11.5
	S3B	Z3B	280			
	S3C	Z3C	756			
	N/A	N/A	195	EX. EMERGENCY LIGHTING CIRCUIT		
2015	S2A	Z2A	114	NRP0202NA-6	5.69	11.5
	S2B	Z2B	312			
	N/A	N/A	190	EX. EMERGENCY LIGHTING CIRCUIT		
	S1A	Z1A	140	NRP0202NA-8	6.27	6.7
2021	N/A	N/A	28	EX. EMERGENCY LIGHTING CIRCUIT	10.47	11.5
	S1B	Z1B	252			
	S1C	Z1C	280			
	N/A	N/A	59	EX. EMERGENCY LIGHTING CIRCUIT		
2021A	N/A	N/A	31	NRP0202NA-6	8.73	10.4
2002	N/A	N/A	42	EX. LIGHTING CIRCUIT	6.52	9.1
2003	N/A	N/A	42	EX. LIGHTING CIRCUIT	6.55	9.1
TOTAL ALLOWED WATTAGE					5124.81	
TOTAL CONNECTED WATTAGE					3088.80	

## LIGHTING SEQUENCE OF OPERATION - 2ND FLOOR

- LIGHTS SHALL BE MANUALLY SWITCHED ON.
- DEFAULT LIGHTING LEVEL FOR ALL LIGHTING ZONES SHALL BE SET TO 60%.
- LIGHTS SHALL AUTOMATICALLY SHUT OFF WHEN THE SPACE HAS BEEN VACANT FOR 20 MINUTES.
- EMERGENCY LIGHTS SHALL NOT BE CONTROLLED BY THE LIGHTING CONTROL SYSTEM.
- ONLY LIGHTING ZONES Z1B-1, Z2A & Z3A SHALL AUTOMATICALLY DIM VIA DAYLIGHTING SENSORS INSTALLED WITHIN THE SAME ZONE.

## PART ROOF PLAN - NEW ELECTRICAL LAYOUT

SCALE: 1 : 100

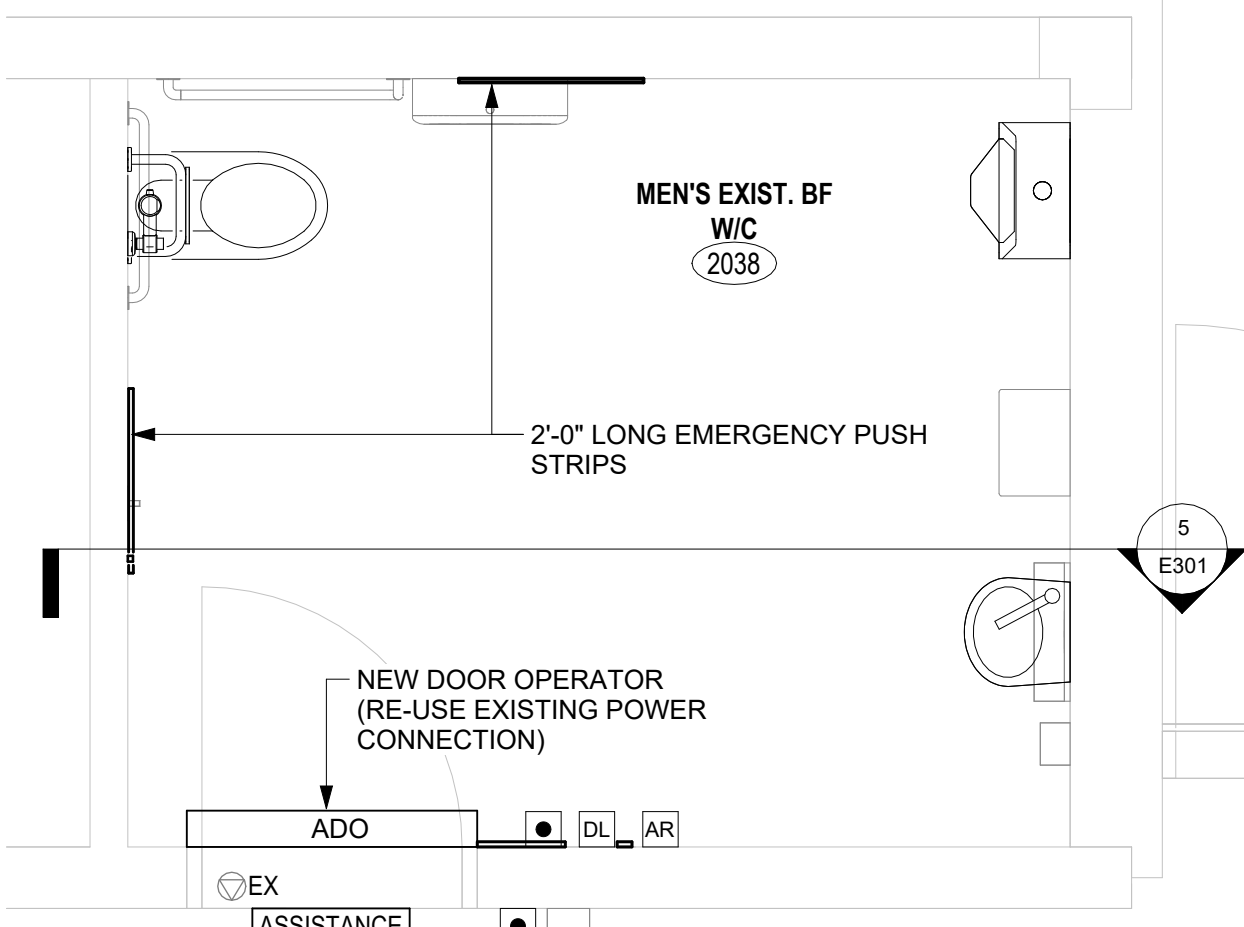
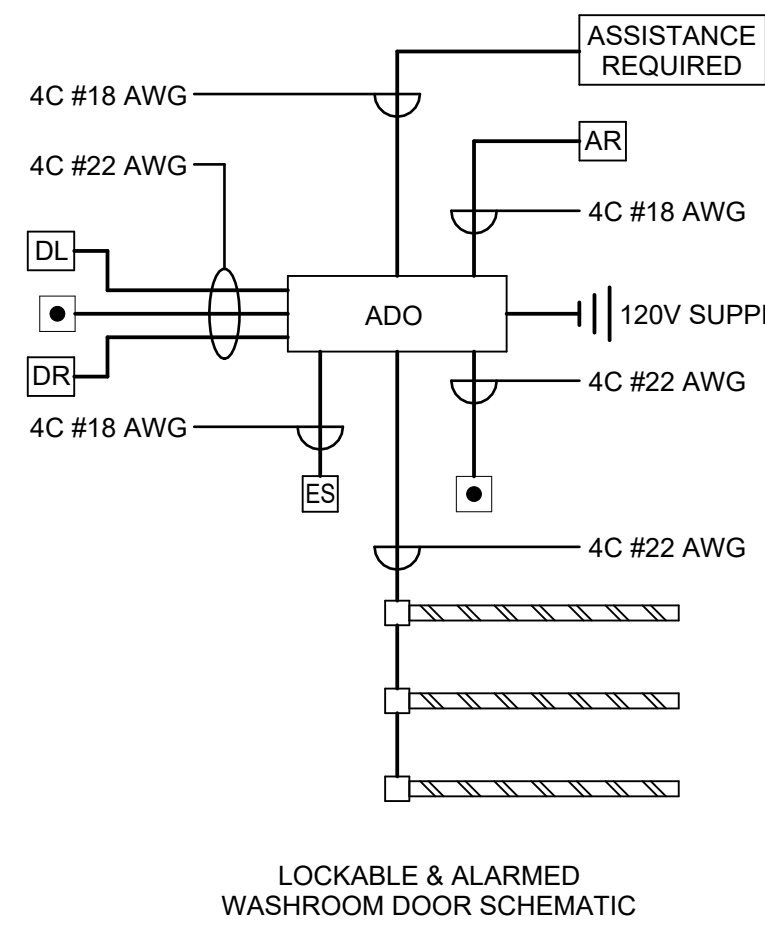
FIELD DEVICE LEGEND			
SYM.	DESCRIPTION	SYM.	DESCRIPTION
[ADO]	AUTOMATIC DOOR OPERATOR	[AR]	"ASSISTANCE REQUESTED" DEVICE
[•]	DOOR ACTIVATION DEVICE	[ASSISTANCE REQUIRED]	"ASSISTANCE REQUIRED" SIGN
[ES]	ELECTRIC STRIKE		
[DL]	DOOR LOCK DEVICE (PUSH TO LOCK PLATE SWITCH)		
[DR]	DOOR RESET BUTTON - PROVIDE LAMACOID PLATE, 1/8" HIGH BLACK LETTERS ON WHITE BACKGROUND TO READ "PRESS TO RESET"		

## SEQUENCE OF OPERATION (ACCESSIBLE WASHROOM):

- DOOR ACTIVATION DEVICE OPENS DOOR.
- DOOR LOCK DEVICE DEACTIVATES EXTERIOR DOOR ACTIVATION DEVICE, LOCKS THE DOOR & ACTIVATES THE IN USE SIGN.
- INTERIOR DOOR ACTIVATION DEVICE UNLOCKS AND OPENS THE DOOR & DEACTIVATES THE IN USE SIGN.
- EMERGENCY CALL STRIPS ACTIVATE THE ASSISTANCE REQUIRED SIGN, THE AUDIBLE BUZZER & UNLOCKS THE DOOR.
- DOOR RESET BUTTON RETURNS THE SYSTEM TO NORMAL MODE.

## NOTES:

- FOR EXACT HEIGHTS, REFER TO ARCHITECTURAL DRAWINGS.
- LOW VOLTAGE WIRING SHALL BE COPPER CONDUCTORS.
- ALL LOW VOLTAGE WIRING SHALL BE STRANDED & SHIELDED INSTALLED IN CONDUIT OR PLENUM RATED IN-HOLLOW METAL DOOR FRAME WHERE ACCESSIBLE.
- RUN WIRES IN IN HEADER OF AUTOMATIC DOOR OPERATOR OPPOSITE HINGE SIDE ABOVE DOOR JAMB TO ALLOW FOR ORGANIZED LOW VOLTAGE WIRING DUE TO LOCATION OF RELAY.
- MINIMUM CONDUIT SIZE TO BE 3/4".

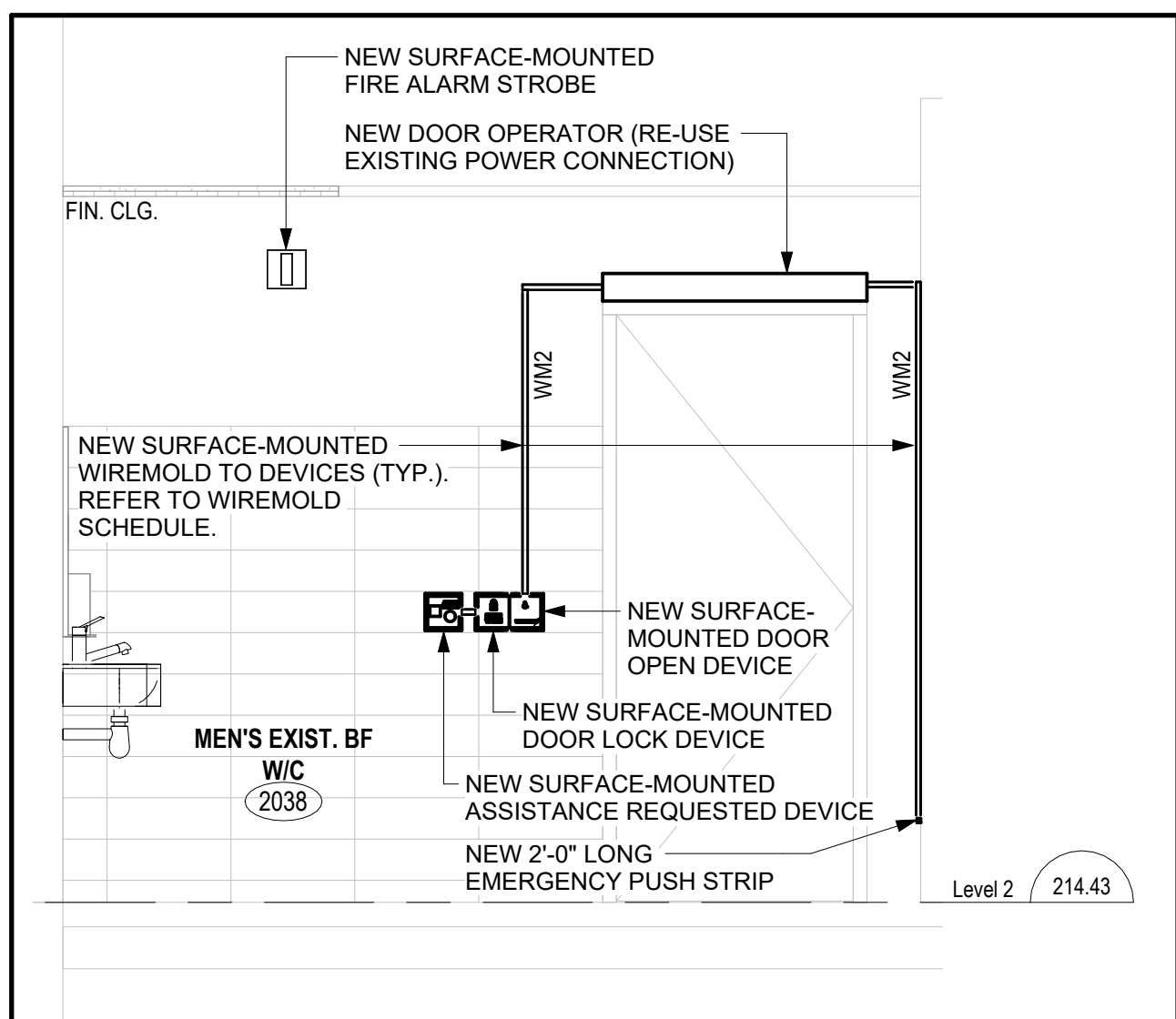


## WASHROOM #2038 - DOOR WIRING SCHEMATIC & NEW ELECTRICAL LAYOUT

SCALE: 1 : 25

## WIREMOLD TYPE SCHEDULE

SYMBOL	TYPE	MATERIAL	COLOR	NOTES
WM1	LEGRAID 500 SERIES WIREMOLD	METALLIC	WHITE (STANDARD)	COMPLETE WITH ALL REQUIRED ACCESSORIES
WM2	LEGRAID 700 SERIES WIREMOLD	METALLIC	WHITE (STANDARD)	COMPLETE WITH ALL REQUIRED ACCESSORIES
WM3	LEGRAID PMSL WIREMOLD	NON-METALLIC	WHITE (STANDARD)	COMPLETE WITH ALL REQUIRED ACCESSORIES

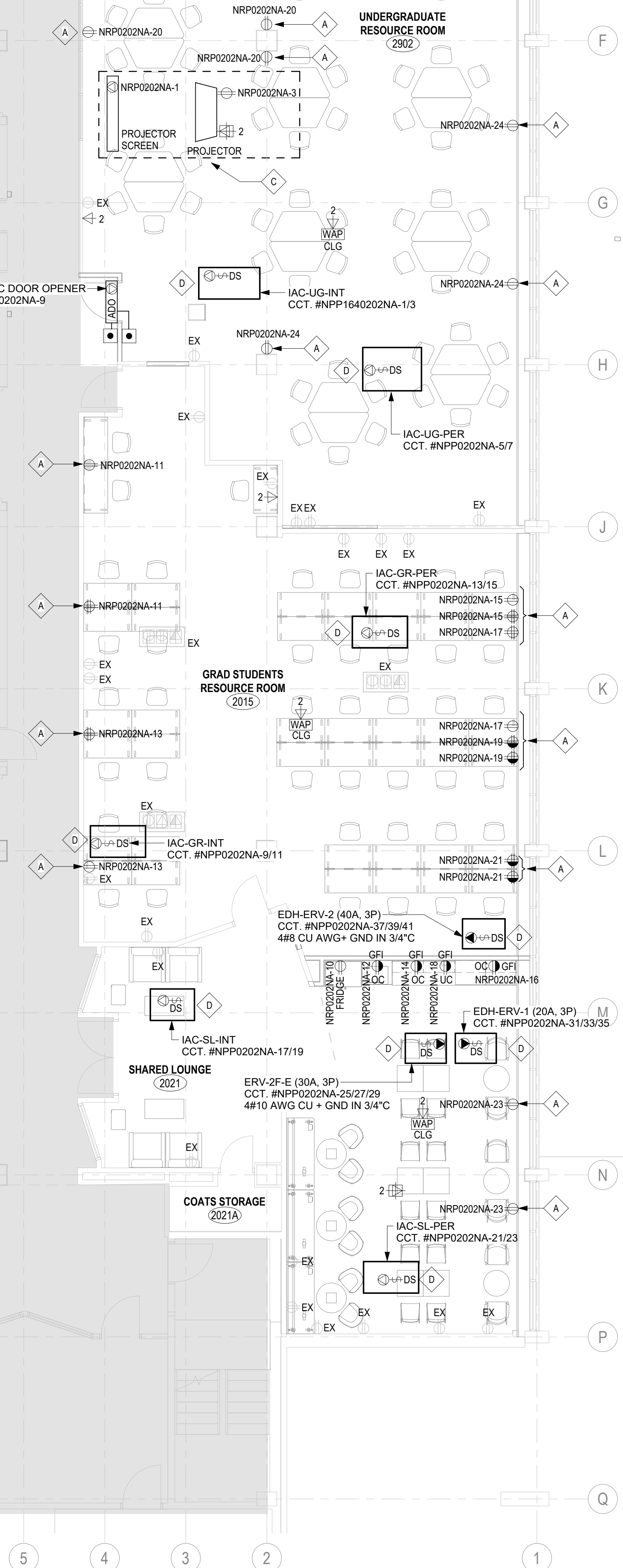
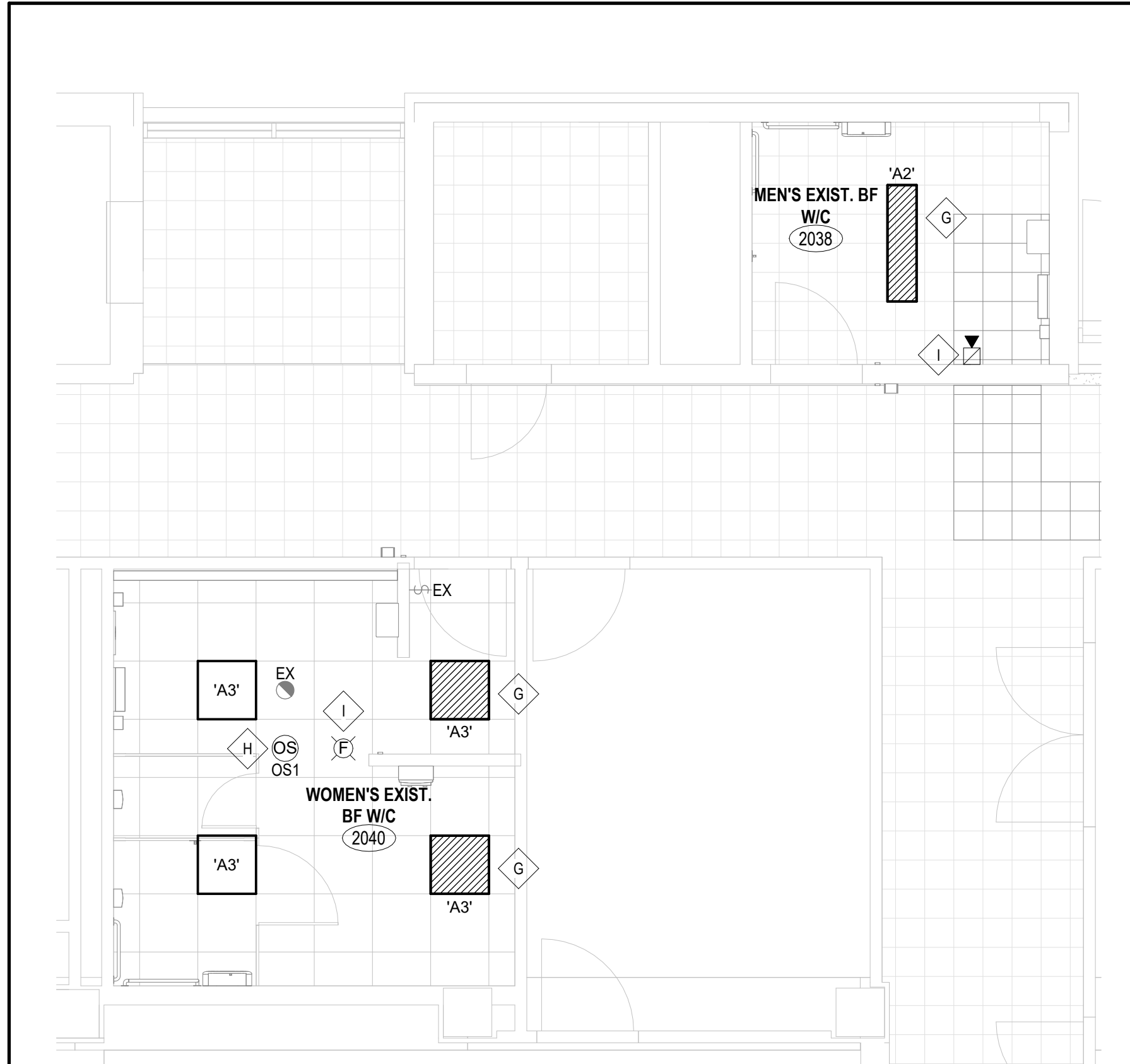


## WR #2038 SOUTH ELEVATION - NEW ELECTRICAL LAYOUT

SCALE: 1 : 25

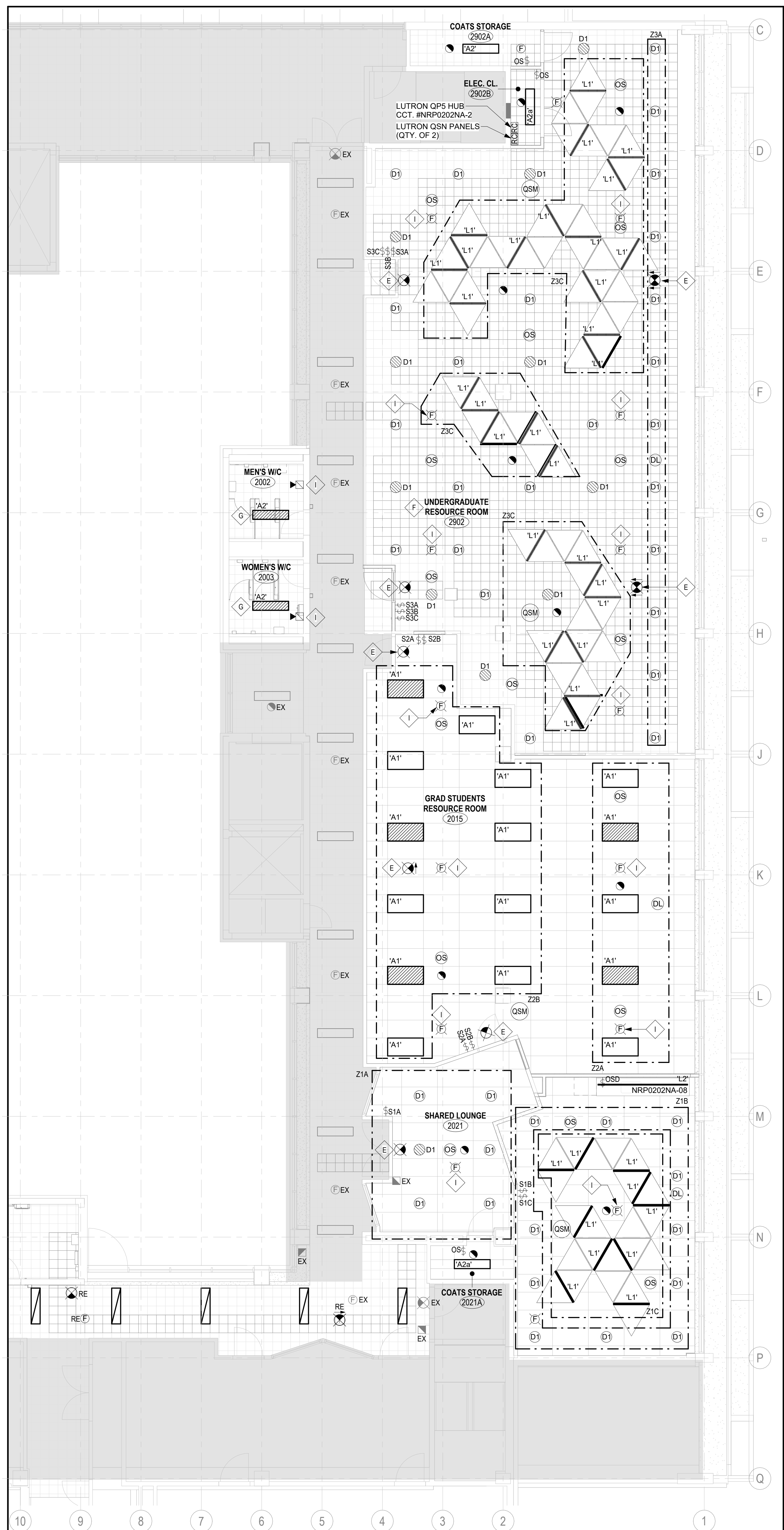
## PART 2ND FLOOR PLAN (SOUTH WASHROOMS) - NEW LIGHTING LAYOUT

SCALE: 1 : 50



## PART 2ND FLOOR PLAN (EAST) - NEW ELECTRICAL LAYOUT

SCALE: 1 : 75



## PART 2ND FLOOR PLAN (EAST) - NEW LIGHTING LAYOUT

SCALE: 1 : 75

REV.	DESCRIPTION	DATE
1	ISSUED FOR TENDER	2016-04-22
2	ISSUED FOR REV. CD	2016-05-09
3	ISSUED FOR PERMIT	2016-05-27
4	ISSUED FOR CLASS A COSTING	2016-06-18
5	ISSUED FOR 10% DD	2016-07-23
6	ISSUED FOR CLASS B COSTING	2016-07-16
7	ISSUED FOR 50% DD	2016-11-28
8	ISSUED FOR 10% SCHEMATIC DESIGN	2016-09-19
9	ISSUED FOR CLASS C COSTING	2016-09-05

KEY PLAN (NTS) SEAL

PROJECT TITLE  
UNIVERSITY OF TORONTO  
**33 URSULA FRANKLIN  
MATH OFFICE  
RENOVATION**

33 Ursula Franklin Street  
DRAWING SHEET TITLE  
**SECOND FLOOR PLAN -  
NEW ELECTRICAL &  
LIGHTING LAYOUTS**

DRAWN BY: GDP SCALE: As Indicated

REVIEWED BY: JW DATE CREATED: 2025-05-27

UNIVERSITY PROJECT NUMBER: NORTH POINT

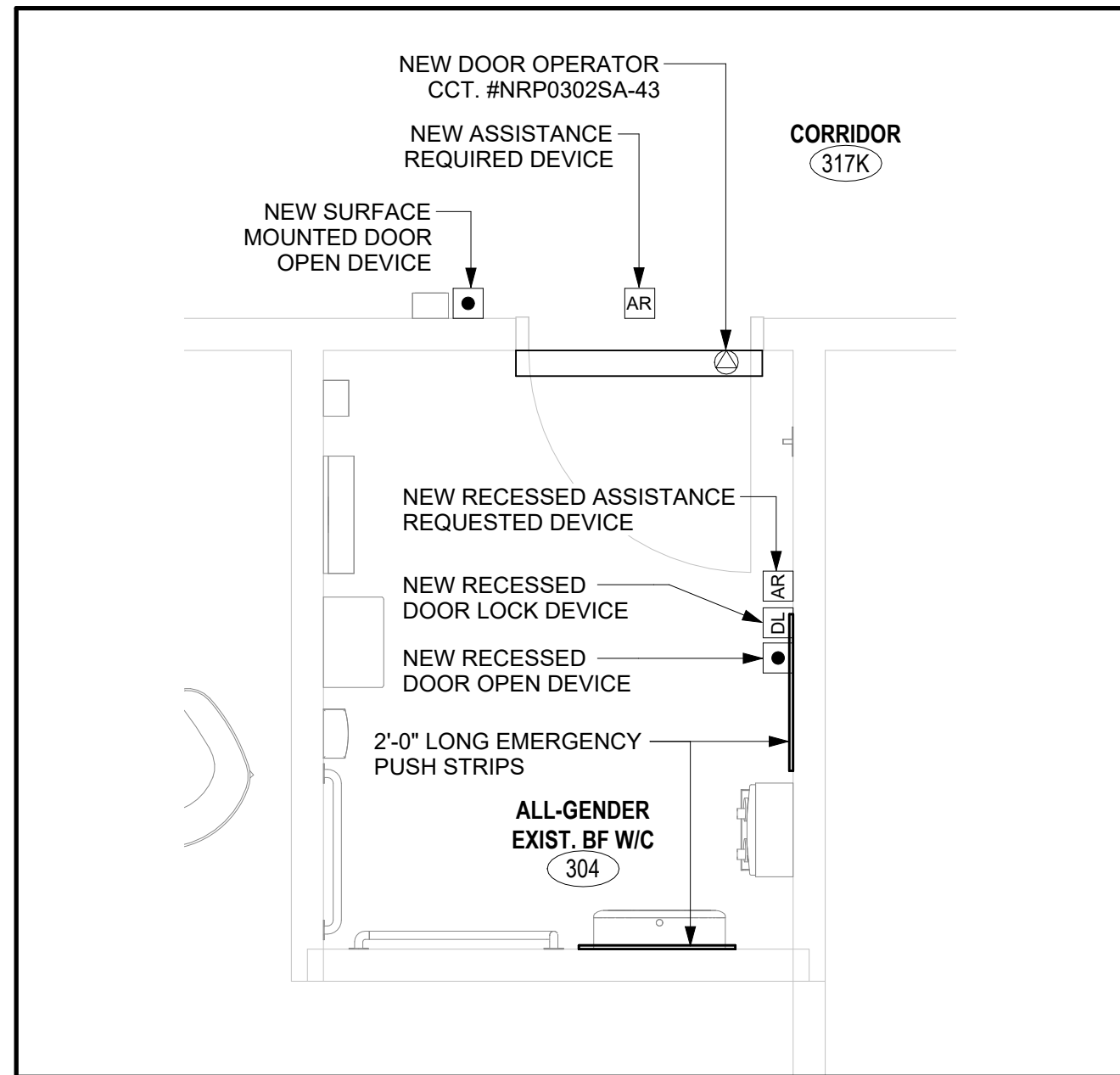
P164-24-165

DRAWING NUMBER REV. NUMBER

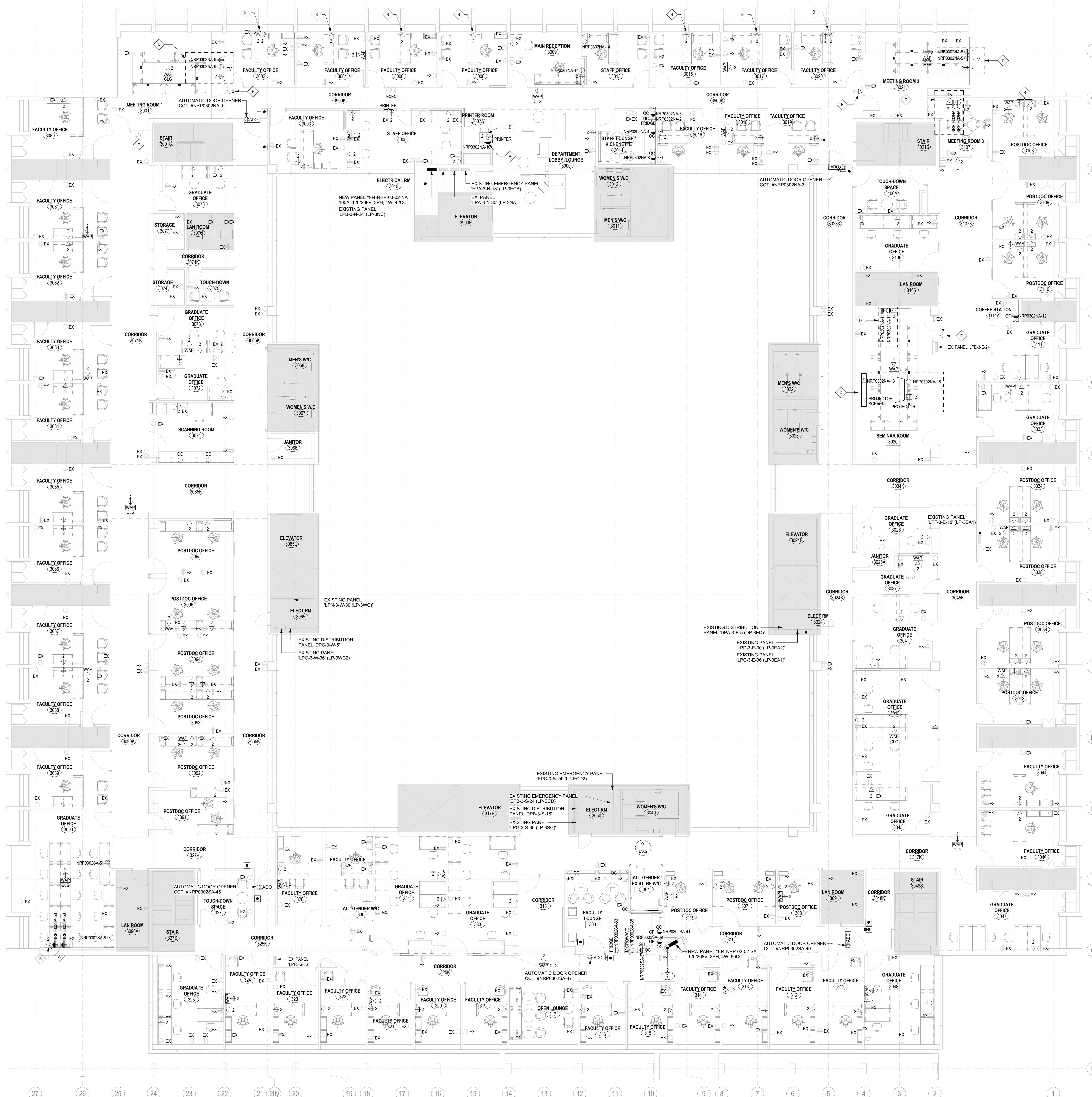
**E301**



- NEW KEYED NOTES**
- A. PROVIDE TYPE 'WM1' SURFACE MOUNTED WIREMOLD RACEWAY, 1-GANG OUTLET BOX & ACCESSORIES FOR INDICATED RECEPTACLE. RUN THE WIREMOLD TO ACCESSIBLE CEILING SPACE VIA THE NEAREST FULL-HEIGHT PARTITION. REFER TO WIREMOLD TYPE SCHEDULE ON THIS DRAWING.
- B. PROVIDE TYPE 'WM3' SURFACE MOUNTED WIREMOLD RACEWAY, 1-GANG OUTLET BOX & ACCESSORIES FOR INDICATED DATA OUTLET. RUN THE WIREMOLD TO ACCESSIBLE CEILING SPACE VIA THE NEAREST FULL-HEIGHT PARTITION. REFER TO WIREMOLD TYPE SCHEDULE ON DRAWING E301.
- C. RECEPTACLES AND DATA OUTLETS SHOWN ON HIGHLIGHTED AREA FOR AV SYSTEM. THE ELECTRICAL CONTRACTOR SHALL CONFIRM RECEPTACLE AND DATA OUTLET LOCATIONS WITH THE GENERAL CONTRACTOR PRIOR TO ROUGH-INS.
- D. RECEPTACLES AND DATA OUTLETS SHOWN ON HIGHLIGHTED AREA ARE RECESSED FOR AV SYSTEM. THE ELECTRICAL CONTRACTOR SHALL CONFIRM RECEPTACLE AND DATA OUTLET LOCATIONS WITH THE GENERAL CONTRACTOR PRIOR TO ROUGH-INS. COORDINATE WITH GENERAL CONTRACTOR FOR DRYWALL REPAIR.
- E. INDICATED DATA OUTLET IS FOR ROOM BOOKING SYSTEM. COORDINATE EXACT LOCATION WITH AV CONTRACTOR PRIOR TO ROUGH-INS.
- F. PROVIDE ONE (1) 15A/1P BREAKER IN EXISTING PANEL (CANADIAN GENERAL ELECTRIC, ANLB) TO FEED NEW FIRE ALARM BOOSTER PANEL IN ELECTRICAL CLOSET #202B.



2  
E302 WASHROOM #304 PLAN - NEW ELECTRICAL LAYOUT  
SCALE: 1: 25



1  
E302 3RD FLOOR PLAN - NEW ELECTRICAL LAYOUT  
SCALE: 1: 75



University of Toronto  
UNIVERSITY PLANNING,  
DESIGN & CONSTRUCTION

Design & Engineering

255 McCaul Street, 4th Floor, Toronto, Ontario M5T 1W7

This drawing is the property of the University of Toronto, and must be returned upon completion of the work. All information shown on this drawing is for use on this specific project. Contractor must verify all dimensions on the job and report any discrepancies to the Architect before proceeding with the work.

ISSUED FOR TENDER	2016-04-22
ISSUED FOR RFP, CD	2016-05-09
ISSUED FOR PERMIT	2016-05-27
ISSUED FOR CLASS A COSTING	2016-02-18
ISSUED FOR 10% B.O.	2016-01-23
ISSUED FOR CLASS B COSTING	2016-01-16
ISSUED FOR 50% B.O.	2015-11-28
ISSUED FOR 10% SCHEMATIC DESIGN	2015-09-19
ISSUED FOR CLASS C COSTING	2015-09-05

REV.	DESCRIPTION	DATE
------	-------------	------

KEY PLAN (NTS)	SEAL
----------------	------

PROJECT TITLE  
UNIVERSITY OF TORONTO  
**33 URSULA FRANKLIN  
MATH OFFICE  
RENOVATION**

33 Ursula Franklin Street  
DRAWING SHEET TITLE  
**THIRD FLOOR PLAN -  
NEW ELECTRICAL  
LAYOUT**

DRAWN BY: GDP  
SCALE: As Indicated

REVIEWED BY: JW  
DATE CREATED: 2025-05-27

UNIVERSITY PROJECT NUMBER: NORTH POINT

P164-24-165

DRAWING NUMBER  
**E302**

REV. NUMBER



- NEW KEYED NOTES**
- A. PROVIDE FIRE ALARM SMOKE DETECTOR CW AUXILIARY CONTACTS. CONNECT THIS DETECTOR TO FIRE ALARM SYSTEM AND ELEVATOR CONTROL PANEL FOR EMERGENCY RECALL.
- B. CONNECT NEW EXIT SIGNS TO NEAREST EXISTING EMERGENCY LIGHTING CIRCUIT WITH SPARE CAPACITY TO SUIT. MODIFY AND/OR EXTEND EXISTING BRAHON WIRING AS REQUIRED. ENSURE CIRCUIT NOT TO BE OVERLOADED.
- C. PROVIDE LUTRON PICO WIRELESS LOW VOLTAGE SWITCHES (QTY. OF 8) AS SPECIFIED FOR CORRIDOR LIGHTING ZONES (LIGHTING ZONES 24A TO 24H).
- D. PROVIDE 3/4" CONDUIT BETWEEN LUTRON QSN PANELS TO LUTRON HUB IN ELEC CLOSET #2902B FOR QS LINKS.
- E. PROVIDE LUTRON POWPAK DIMMING MODULE (CAT.#: RMJS-BT-DV-B) FOR INDATED ROOM. REFER TO DETAIL 1 ON DRAWING E501. PROVIDE ALL NECESSARY ACCESSOIRES TO ENSURE A COMPLETE INSTALLATION.
- F. UNDER CABINET LIGHTS L134 & L135 SHALL BE CONTROLLED BY THE SAME OCCUPANCY SENSOR DIMMER SWITCH AND FED FROM THE SAME POWER SUPPLY. JUMPING CABLE SHALL NOT BE USED.
- G. LUTRON DIN RAIL POWER SUPPLY (CAT.#: QSPS-D4-1-75) TO BE INSTALLED IN AN ENCLOSURE ABOVE THE CEILING SPACE. PROVIDE 120V/15A POWER CONNECTION AS INDICATED.
- H. PROVIDE NEW FIRE ALARM STROBE CIRCUIT(S) FROM NEW FIRE ALARM BOOSTER PANEL TO FIRE ALARM STROBES AND FIRE ALARM BREAKER STROBES IN RENOVATION AREA. PROVIDE ALL NECESSARY ACCESSOIRES TO ENSURE A COMPLETE FUNCTIONAL INSTALLATION.
- I. PROVIDE TYPE 'WM1' SURFACE-MOUNTED WIREMOLD RACEWAY. 1-GANG OUTLET BOX & ACCESSORIES FOR INDICATED SENSOR SWITCH. RUN THE WIREMOLD TO ACCESSIBLE CEILING SPACE VIA THE NEAREST FULL-HEIGHT PARTITION. REFER TO WIREMOLD TYPE SCHEDULE ON THIS DRAWING.

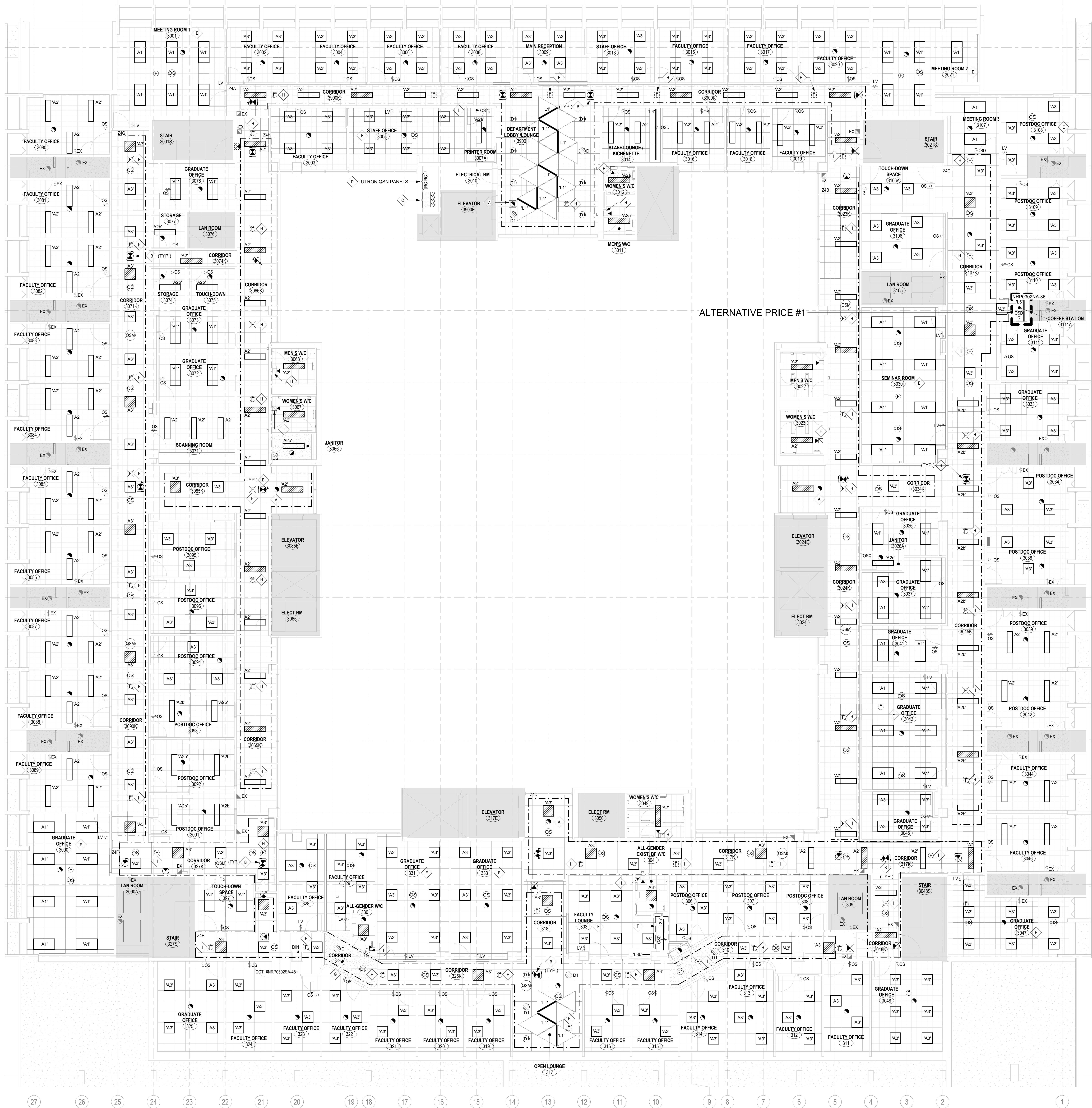
LIGHTING ZONE CIRCUITS - 3RD FLOOR						
RM No.	SWITCH No.	LTG ZONE	WATTAGE	CIRCUIT No.	LPD (W/m2)	SB-10 LPD (W/m2)
3900	S4A	24A	294	NRP0302NA-34	9.02	10.8
	N/A		252	EX. EMERGENCY LIGHTING CIRCUIT		
3900K	S4A	24A	364	NRP0302NA-34	10.26	
	N/A		56	EX. EMERGENCY LIGHTING CIRCUIT		
3023K	S4B	24B	168	NRP0302NA-36	7.43	
	N/A		54	EX. EMERGENCY LIGHTING CIRCUIT		
3024K	S4B	24B	210	NRP0302NA-36	8.02	
	N/A		54	EX. EMERGENCY LIGHTING CIRCUIT		
3034K	S4B	24B	30	NRP0302NA-36	3.91	
	N/A		42	EX. EMERGENCY LIGHTING CIRCUIT		
3017K	S4C	24C	162	NRP0302NA-36	6.11	
	N/A		102	EX. EMERGENCY LIGHTING CIRCUIT		
3045K	S4C	24C	210	NRP0302NA-36	5.83	7.1
	N/A		84	EX. EMERGENCY LIGHTING CIRCUIT		
325K	S4D	24D	204	NRP0302NA-38	6.44	
	N/A		174	EX. EMERGENCY LIGHTING CIRCUIT		
3048K	S4D	24D	42	NRP0302NA-38	9.67	
	N/A		42	EX. EMERGENCY LIGHTING CIRCUIT		
310	S4E	24E	118	NRP0302NA-38	7.72	
	N/A		68	EX. EMERGENCY LIGHTING CIRCUIT		
318K	S4E	24E	30	NRP0302NA-38	5.46	
	N/A		30	EX. EMERGENCY LIGHTING CIRCUIT		
325K	S4E	24E	148	NRP0302NA-38	8.01	
	N/A		118	EX. EMERGENCY LIGHTING CIRCUIT		
317	S4E	24E	168	NRP0302NA-38	14.31	10.8
	N/A		56	EX. EMERGENCY LIGHTING CIRCUIT		
327K	S4F	24F	90	NRP0302NA-38	8.16	
	N/A		60	EX. EMERGENCY LIGHTING CIRCUIT		
3071K	S4G	24G	150	NRP0302NA-38	5.37	
	N/A		90	EX. EMERGENCY LIGHTING CIRCUIT		
3090K	S4G	24G	150	NRP0302NA-38	6.14	
	N/A		90	EX. EMERGENCY LIGHTING CIRCUIT		
3066K	S4H	24H	168	NRP0302NA-40	7.56	7.1
	N/A		126	EX. EMERGENCY LIGHTING CIRCUIT		
3085K	S4H	24H	102	NRP0302NA-40	4.98	
	N/A		72	EX. EMERGENCY LIGHTING CIRCUIT		
3065K	S4H	24H	126	NRP0302NA-40	5.66	
	N/A		84	EX. EMERGENCY LIGHTING CIRCUIT		
TOTAL ALLOWED WATTAGE					4543.24	
TOTAL CONNECTED WATTAGE					4402.00	

- LIGHTING SEQUENCE OF OPERATION - 3RD FLOOR**
1. DEFAULT CORRIDOR LIGHTING LEVEL SHALL BE SET TO 80%.
2. LIGHTS SHALL AUTOMATICALLY DIM DOWN TO 20% WHEN THE SPACE HAS BEEN VACANT FOR 20 MINUTES.
3. EMERGENCY LIGHTS SHALL NOT BE CONTROLLED BY THE LIGHTING CONTROL SYSTEM.

**ALTERNATIVE PRICE #1**

ELECTRICAL CONTRACTOR SHALL PROVIDE THE ITEM BELOW AS AN ALTERNATIVE PRICE

• PROVIDE ONE (1) TYPE 'L5' UNDER CABINET LIGHT AND ONE (1) WALL MOUNTED OCCUPANCY SENSOR DIMMER SWITCH AS SPECIFIED AND CONNECT TO CIRCUIT AS NOTED.



3RD FLOOR PLAN - NEW LIGHTING LAYOUT  
SCALE: 1" = 7'5"

REV.	DESCRIPTION	DATE
ISSUED FOR TENDER		2016-04-22
ISSUED FOR RFP		2016-05-09
ISSUED FOR PERMIT		2016-05-27
ISSUED FOR CLASS A COSTING		2016-02-18
ISSUED FOR PERM. NO.		2016-01-23
ISSUED FOR CLASS B COSTING		2016-01-16
ISSUED FOR 50% DD		2015-11-28
ISSUED FOR 10% SCHEMATIC DESIGN		2015-09-19
ISSUED FOR CLASS C COSTING		2015-09-05

KEY PLAN (NTS) SEAL

PROJECT TITLE  
UNIVERSITY OF TORONTO  
**33 URSULA FRANKLIN  
MATH OFFICE  
RENOVATION**

33 Ursula Franklin Street  
DRAWING SHEET TITLE  
**THIRD FLOOR PLAN -  
NEW LIGHTING LAYOUT**





UNIVERSITY OF TORONTO										
164-NRP-02-02-NA				DATE MODIFIED:						
BLDG #:		164		PANEL TAG						
CONNECTED LOAD (w)	DEMAND FACTOR	TOTAL DEMAND	DESCRIPTION (Item, Room Number(s))	BKR (A)	CT	BKR (A)	DESCRIPTION (Item, Room Number(s))	CONNECTED LOAD (w)	DEMAND FACTOR	TOTAL DEMAND
300	0.50	150	RM #2602 - PROJECTOR SCREEN	15A	1 A 2	15A	LIGHTING CONTROL PANELS	200	1.00	200
300	0.50	150	RM #2602 - PROJECTOR	15A	3 B 4	15A	RM #2602 - LIGHTING	1316	1.00	1316
		0	SPARE	15A	5 B 6	15A	RM #2015, 2902A & 2902B - LIGHTING	453	1.00	453
		0	SPARE	15A	7 A 8	15A	RM #2021 - LIGHTING	703	1.00	703
300	0.50	150	DOOR #2902 - AUTOMATIC DOOR OPENER	15A	9 B 10	15A	RM #2021 - FRIDGE	500	0.80	400
1200	0.50	600	RM #2015 - RECEPTACLES (QTY. 2)	15A	11 C 12	20A	RM #2021 - COUNTERTOP RECEPTACLE	1000	0.80	800
1200	0.50	600	RM #2015 - RECEPTACLES (QTY. 2)	15A	13 A 14	20A	RM #2021 - COUNTERTOP RECEPTACLE	1000	0.80	800
1200	0.50	600	RM #2015 - RECEPTACLES (QTY. 2)	15A	15 B 16	20A	RM #2021 - COUNTERTOP RECEPTACLE	1000	0.80	800
1200	0.50	600	RM #2015 - RECEPTACLES (QTY. 2)	15A	17 B 18	15A	RM #2021 - INSTANT HOT WATER	1500	0.50	750
1600	0.50	800	RM #2015 - RECEPTACLES (QTY. 2)	20A	19 A 20	15A	RM #2602 - RECEPTACLES (QTY. 3)	600	0.50	300
1600	0.50	800	RM #2015 - RECEPTACLES (QTY. 2)	20A	21 B 22	15A	RM #2602 - RECEPTACLES (QTY. 3)	600	0.50	300
400	0.50	200	RM #2021 - RECEPTACLES (QTY. 2)	15A	23 B 24	15A	RM #2602 & #2603B - RECEPTACLES (QTY. 2)	400	0.50	200
		0	SPARE	15A	25 A 26	15A	SPARE			0
		0	SPARE	15A	27 B 28	15A	SPARE			0
		0	SPARE	15A	29 B 30	15A	SPARE			0
		0	SPARE	20A	31 A 32	15A	SPARE			0
		0	SPARE	20A	33 B 34	15A	SPARE			0
		0	SPACE		35 B 36		SPACE			0
		0	SPACE		37 A 38		SPACE			0
		0	SPACE		39 B 40		SPACE			0
		0	SPACE		41 B 42		SPACE			0
BLDG:		164	FLOOR:	2nd Floor	ROOM:	2902B	NEW TAG:	164-NRP-02-02-NA		

164-NPP-02-02-NA										TORONTO	
BLDG #:			164			PANEL TAG:			DATE MODIFIED:		
CONNECTED LOAD (w)	DEMAND FACTOR	TOTAL DEMAND	DESCRIPTION (Item, Room Number[s])	BKR (A)	CT	BKR (A)	DESCRIPTION (Item, Room Number[s])	CONNECTED LOAD (w)	DEMAND FACTOR	TOTAL DEMAND	
375	0.50	187.5	RM#2092 - IAC-UG-INT	15A	1 A 2	50A	ROOF - OAC-2F-E-A	5740	0.50	2870.12	
375	0.50	187.5		2P	3 B 4	3P		5740	0.50	2870.12	
710	0.50	355	RM#2092 - IAC-UG-PER	15A	5 B 6		ROOF - OAC-2F-E-B	5740	0.50	2870.12	
710	0.50	355		2P	7 A 8	40A		4363	0.50	2191.62	
312	0.50	156	RM#2015 - IAC-GR-INT	15A	9 B 10	3P	ROOF - OAC-2F-E-B	4363	0.50	2191.62	
312	0.50	156		2P	11 B 12	3P		4363	0.50	2191.62	
374	0.50	187.2	RM#2015 - IAC-GR-PER	15A	13 A 14	20A	ROOF - GFI RECEPTACLE	200	0.50	100	
374	0.50	187.2		2P	15 B 16			SPACE			0
198	0.50	98.8	RM#2021 - IAC-SL-INT	15A	17 B 18		SPACE			0	
198	0.50	98.8		2P	19 A 20			SPACE			0
322	0.50	161.2	RM#2021 - IAC-SL-PER	15A	21 B 22		SPACE			0	
322	0.50	161.2		2P	23 B 24			SPACE			0
1621	0.50	810.6	RM#2021 - ERV-2F-E	30A	25 A 26		SPACE			0	
1621	0.50	810.6		3P	27 B 28			SPACE			0
1621	0.50	810.6		3P	29 B 30			SPACE			0
2084	0.50	1041.77	RM#2021 - EDH-ERV-1	20A	31 A 32		SPACE			0	
2084	0.50	1041.77		3P	33 B 34			SPACE			0
2084	0.50	1041.77		3P	35 B 36			SPACE			0
4376	0.50	2187.87	RM#2021 - EDH-ERV-2	40A	37 A 38		SPACE			0	
4376	0.50	2187.87		3P	39 B 40			SPACE			0
4376	0.50	2187.87		3P	41 B 42			SPACE			0

164-NRP-03-02-NA												
BLDG #:			164		PANEL TAG:		DATE MODIFIED:					
CONNECTED LOAD (w)	DEMAND FACTOR	TOTAL DEMAND	DESCRIPTION (Item, Room Number[s])		BKR (A)	CT	BKR (A)	DESCRIPTION (Item, Room Number[s])	CONNECTED LOAD (w)	DEMAND FACTOR	TOTAL DEMAND	
300	0.50	150	DOOR #3086K - AUTOMATIC DOOR OPENER		15A	1	A 2	15A	RM #3014 - FRIDGE	500	0.80	400
300	0.50	150	DOOR #3090K - AUTOMATIC DOOR OPENER		15A	3	B 4	20A	RM #3014 - COUNTERTOP RECEPTACLE	1000	0.80	800
300	0.50	150	RM #3021 - TV RECEPTACLE		15A	5	B 6	20A	RM #3014 - COUNTERTOP RECEPTACLE	1000	0.80	800
300	0.50	150	RM #3107 - TV RECEPTACLE		15A	7	A 8	20A	RM #3014 - COUNTERTOP RECEPTACLE	1000	0.80	800
300	0.50	150	RM #3001 - TV RECEPTACLE		15A	9	B 10	20A	RM #3007A - PRINTER	500	0.80	400
1000	0.50	500	RM #3030 - AV RACK		20A	11	C 12	20A	RM #3111A - COUNTERTOP RECEPTACLE	1000	0.80	800
300	0.50	150	RM #3030 - PROJECTOR SCREEN		15A	13	A 14	15A	OFFICE #3009 & #3013 RECEPTACLES (QTY. 2)	600	0.80	480
300	0.50	150	RM #3030 - PROJECTOR		15A	15	B 16	15A	SPARE			0
		0	SPARE		15A	17	C 18	15A	SPARE			0
		0	SPARE		15A	19	A 20	15A	SPARE			0
		0	SPARE		15A	21	B 22		SPACE			0
		0	SPACE			23	C 24		SPACE			0
		0	SPACE			25	A 26		SPACE			0
		0	SPACE			27	B 28		SPACE			0
		0	SPACE			29	B 30		SPACE			0
		0	SPACE			31	A 32		SPACE			0
		0	SPACE			33	B 34	15A	CORR. #3006K & LOBBY #3000 - LIGHTING (20A)	658	1.00	658
		0	SPACE			35	B 36	15A	CORR. #317K, #3048K, #310, #318, #325K, #327K & LOUNGE #317 - LIGHTING (20A & 24V)	766	1.00	766
		0	SPACE			37	A 38	15A	CORR. #3071K, #3006K, #3006K, #3006K & #3006K - LIGHTING (20A, 24V & 24V)	800	1.00	800
		0	SPACE			39	B 40	15A	CORR. #3071K, #3006K, #3006K, #3006K & #3006K - LIGHTING (20A & 24V)	695	1.00	695
		0	SPACE			41	C 42	15A	LIGHTING CONTROL PANELS	200	1.00	200

164-NRP-03-02-SA											
BLDG #:		PANEL TAG:		DATE MODIFIED:							
CONNECTED LOAD (w)	DEMAND FACTOR	TOTAL DEMAND	DESCRIPTION (Item, Room Number[s])	BKR (A)	CT	CT	BKR (A)	DESCRIPTION (Item, Room Number[s])	CONNECTED LOAD (w)	DEMAND FACTOR	TOTAL DEMAND
		0	TRANSFERRED LOADS - PLUGS	15A	1 A 2	15A	TRANSFERRED LOADS - LIGHTS				0
		0	TRANSFERRED LOADS - PLUGS	15A	3 B 4	15A	TRANSFERRED LOADS - LIGHTS				0
		0	TRANSFERRED LOADS - LIGHTS	15A	5 B 6	15A	TRANSFERRED LOADS - PLUGS				0
		0	TRANSFERRED LOADS - LIGHTS	15A	7 A 8	15A	TRANSFERRED LOADS - PLUGS				0
		0	TRANSFERRED LOADS - LIGHTS	15A	9 B 10	15A	TRANSFERRED LOADS - PLUGS				0
		0	TRANSFERRED LOADS - PLUGS	15A	11 B 12	15A	TRANSFERRED LOADS - PLUGS				0
		0	TRANSFERRED LOADS	15A	13 A 14	15A	TRANSFERRED LOADS - LIGHTS				0
		0	TRANSFERRED LOADS - PLUGS GFIWR	15A	15 B 16	15A	TRANSFERRED LOADS - LIGHTS				0
		0	TRANSFERRED LOADS - PLUGS	15A	17 B 18	15A	TRANSFERRED LOADS				0
		0	TRANSFERRED LOADS - PLUGS	15A	19 A 20	15A	TRANSFERRED LOADS				0
		0	TRANSFERRED LOADS - PLUGS	15A	21 B 22	15A	TRANSFERRED LOADS - PLUGS				0
		0	TRANSFERRED LOADS - PLUGS	15A	23 B 24	15A	TRANSFERRED LOADS - PLUGS				0
		0	TRANSFERRED LOADS - PLUGS	15A	25 A 26	20A	TRANSFERRED LOADS - PLUGS				0
		0	TRANSFERRED LOADS - PLUGS	15A	27 B 28	20A	TRANSFERRED LOADS - PLUGS				0
		0	TRANSFERRED LOADS - PLUGS	15A	29 B 30	20A	TRANSFERRED LOADS				0
		0	TRANSFERRED LOADS	20A	31 A 32	15A	TRANSFERRED LOADS - HEATER 3048				0
500	0.80	400	RM #303 - FRIDGE	15A	33 B 34	15A	TRANSFERRED LOADS				0
1000	0.80	800	RM #303 - MICROWAVE	15A	35 B 36	15A	TRANSFERRED LOADS				0
1000	0.80	800	RM #303 - COUNTER RECEPTACLE	20A	37 A 38	15A	TRANSFERRED LOADS				0
1000	0.80	800	RM #303 - COUNTER RECEPTACLE	20A	39 B 40	15A	TRANSFERRED LOADS				0
1000	0.80	800	RM #303 - COUNTER RECEPTACLE	20A	41 C 42	15A	TRANSFERRED LOADS				0
300	0.50	150	WR #304 - AUTOMATIC DOOR OPENER	15A	43 A 44	15A	TRANSFERRED LOADS				0
300	0.50	150	DOOR #327K - AUTOMATIC DOOR OPENER	15A	45 B 46	15A	TRANSFERRED LOADS				0
300	0.50	150	DOOR #304 - AUTOMATIC DOOR OPENER	15A	47 B 48	15A	LUTRON POWER SUPPLY	100	1.00	100	100
300	0.50	150	DOOR #348K - AUTOMATIC DOOR OPENER	15A	49 A 50		SPACE				0
600	0.50	300	OFFICE #3090 - RECEPTACLES (QTY. 2)	15A	51 B 52		SPACE				0
1600	0.50	800	OFFICE #3090 - RECEPTACLES (QTY. 2)	20A	53 B 54		SPACE				0
		0	SPARE	15A	55 A 56		SPACE				0
		0	SPARE	15A	57 B 58		SPACE				0
		0	SPARE	15A	59 B 60		SPACE				0
BLDG:		164	FLOOR:	3rd Floor	ROOM:	310A	NEW TAG:	164-NRP-03-02-SA			
RATINGS:		100A	120/208V	3 PHASE	4 WIRE	S.C.:	18kAIC				
FED FROM:		PANEL TAG:	BLDG #:	ROOM #:	BREAKER SIZE:	FEEDER SIZE:					
		DPA-3-N-16 (DP-3NF)	164	3050	100A	483 AWG CU + GND					

## DEMOLITION KEYED NOTES

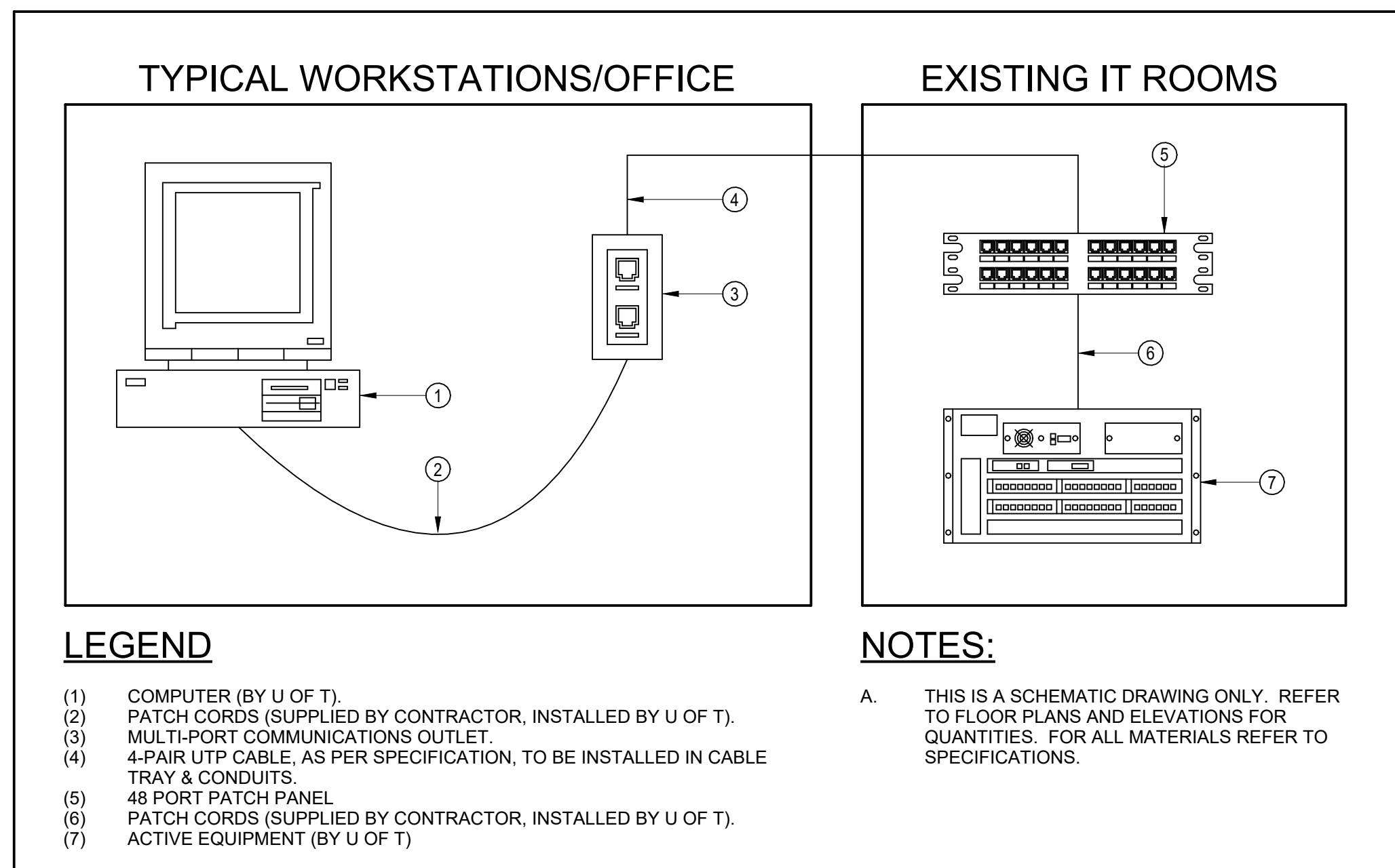
- DISCONNECT & REMOVE EXISTING MAIN FE



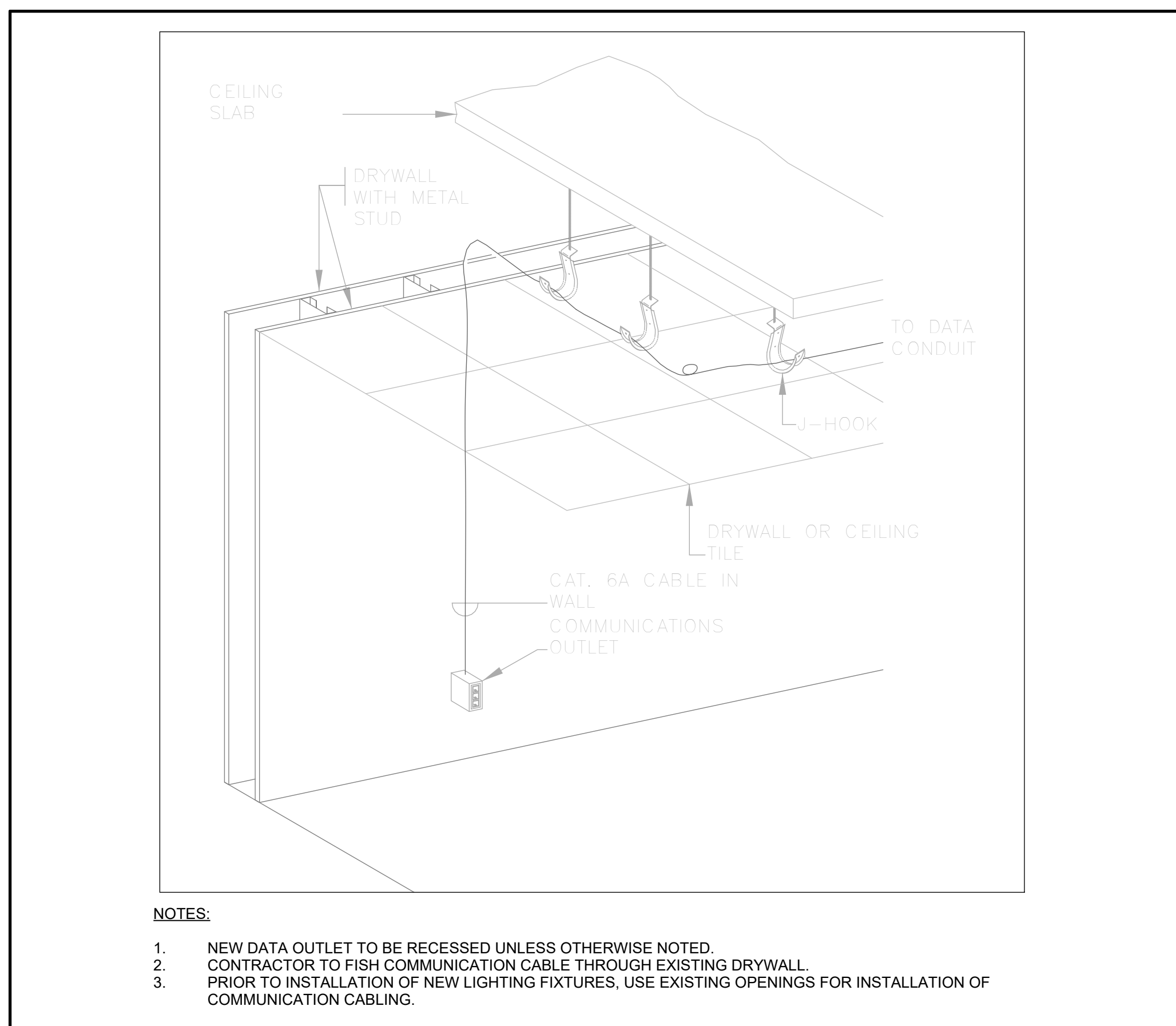


255 McCaul Street, 4th Floor, Toronto, Ontario M5T 1W7

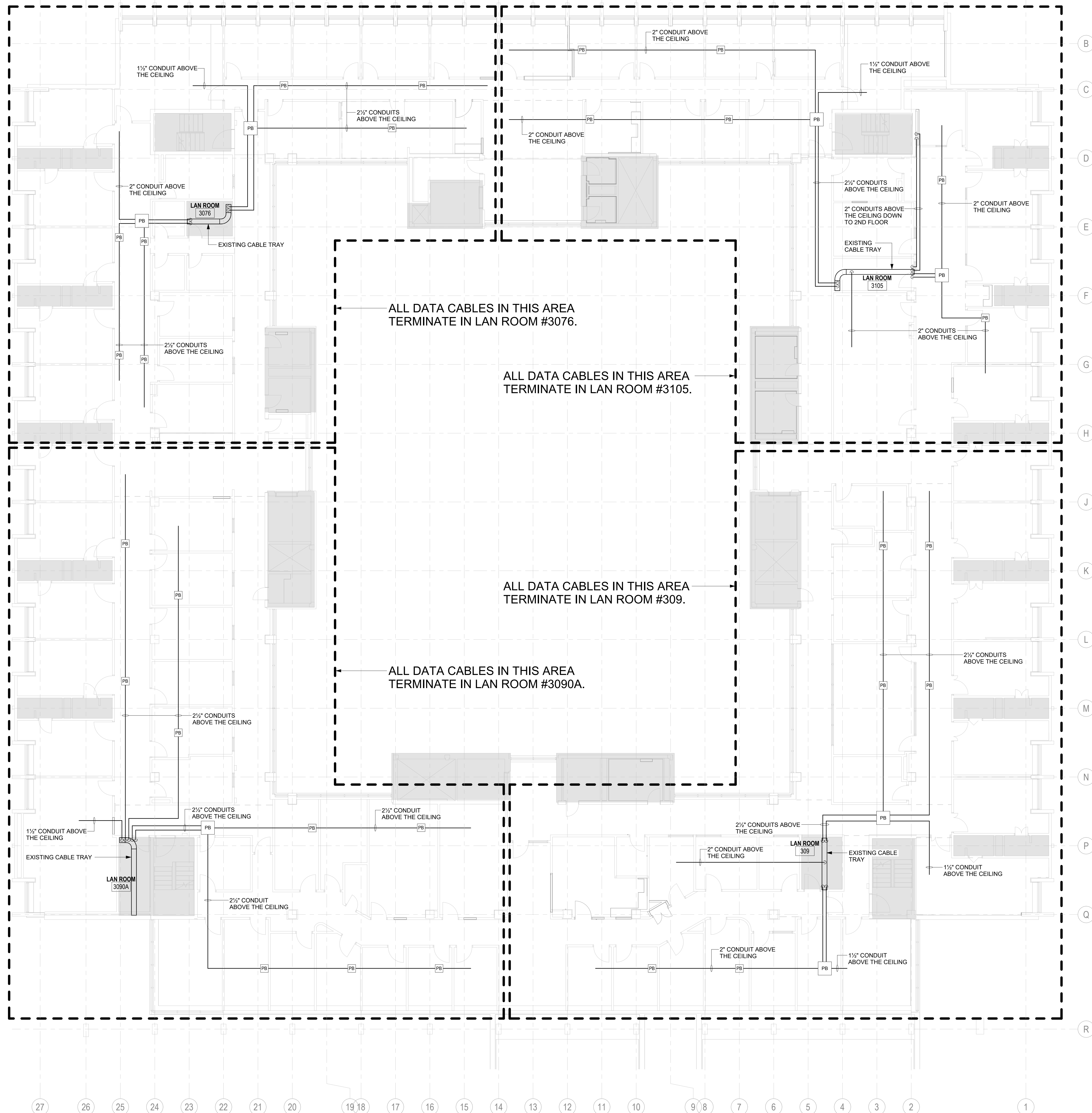
- ## GENERAL DRAWING NOTES
1. PROPOSED COMMUNICATION MAIN CONDUITS ROUTING LAYOUT IS FOR REFERENCE ONLY.
  2. PROPOSED PULL BOX LOCATIONS ARE FOR REFERENCE ONLY. ELECTRICAL CONTRACTOR TO PROVIDE QUANTITIES & SIZES AS REQUIRED TO COMPLETE THE INSTALLATION.
  3. ALL COMMUNICATION CONDUITS IN EXISTING LAN ROOMS SHALL STOP AT THE TOP OF THE EXISTING CABLE LADDER TRAY.
  4. PROVIDE TWO (2) 1U, 48-PORTS COMPATIBLE PATCH PANELS FOR REGULAR DATA (EXCLUDING WAPs) IN LAN ROOM 309, 3090A & 3076 (6 IN TOTAL).
  5. PROVIDE THREE (3) 1U, 48-PORTS COMPATIBLE PATCH PANELS FOR REGULAR DATA (EXCLUDING WAPs) IN LAN ROOM 3105.
  6. NETWORK SWITCHES TO BE SUPPLIED BY THE U of T AND INSTALLED BY THE CONTRACTOR.
  7. CONTRACTOR SHALL COORDINATE WITH CONSULTANT PRIOR TO INSTALLING PATCH PANELS & SWITCHES.



3 TYPICAL DATA CONNECTIVITY SCHEMATIC  
E402 SCALE: NTS



2 DATA OUTLET DETAILS  
E402 SCALE: NTS



1  
E402

3RD FLOOR PLAN - MAIN COMMUNICATION CONDUIT LAYOUT

SCALE: 1 : 100

REV.	DESCRIPTION	DATE
	ISSUED FOR TENDER	2016-04-22
	ISSUED FOR BOI, CD	2016-03-09

KEY PLAN (NTS)	SEAL
----------------	------

PROJECT TITLE:  
UNIVERSITY OF TORONTO  
**33 URSULA FRANKLIN  
MATH OFFICE  
RENOVATION**

33 Ursula Franklin Street

---

DRAWING SHEET TITLE

**COMMUNICATION MAIN  
CONDUIT LAYOUT &  
ELECTRICAL DETAILS**

DRAWN BY: GDP	SCALE: N/A
REVIEWED BY: JW	DATE CREATED: 2025-05-27

P164-24-165

DRAWING NUMBER	REV. NUMBER
<b>E402</b>	





LUMINAIRE SCHEDULE										
TYPE	DESCRIPTIONS	INSTALLATION	MODEL #	VOLTAGE	DIMMING	WATTAGE	LUMENS	COLOR TEMP.	CRI	
A1'	2' x 4' LED PANEL	RECESSED	ORACLE LIGHTING (BY ELITE LIGHTING), CAT.#: 24-FPL1-LUGR+LED-4000L/5000L/6000L-DIM10-MVOLT-35K/40K/50K-85	120V	0-10V	46.0 W	6000 lm	3500 K	85	
A2'	1' x 4' LED PANEL	RECESSED	ORACLE LIGHTING (BY ELITE LIGHTING), CAT.#: 14-FPL1-LED-2000L/3000L/4000L-DIM10-MVOLT-35K/40K/50K-85	120V	0-10V	42.0 W	4000 lm	3500 K	85	
A2a'	1' x 4' LED PANEL	RECESSED	ORACLE LIGHTING (BY ELITE LIGHTING), CAT.#: 14-FPL1-LED-2000L/3000L/4000L-DIM10-MVOLT-35K/40K/50K-85	120V	0-10V	31.0 W	3000 lm	3500 K	85	
A2b'	1' x 4' LED PANEL	SURFACE	ORACLE LIGHTING (BY ELITE LIGHTING), CAT.#: 22-FPL1-LED-SMK	120V	0-10V	42.0 W	4000 lm	3500 K	85	
A3'	2' x 2' LED PANEL	RECESSED	ORACLE LIGHTING (BY ELITE LIGHTING), CAT.#: 22-FPL-BL-LED-4000L/5000L/6000L-DIM10-MVOLT-35K/40K/50K-85	120V	0-10V	30.0 W	4000 lm	3500 K	85	
L1'	4' LED LINEAR	SUSPENDED	AXIS SCULPT, CAT.#: SC2-500-90-35-F-4-F-1-BL-E-UNV-3P-1-C-CA48/120INCH	120V	0-10V	22.4 W	2000 lm	3500 K	90+	
L2'	120" UNDER CABINET LIGHTS	SURFACE	LUMINII BARA SURFACE STATIC WHITE, CAT.#: BAR-120INCH-HE64LO-35K-F-FC-SA-LPE & PS-UNI-30W-24	120V	0-10V	19.0 W	2000 lm	3500 K	90	
L3a'	70" UNDER CABINET LIGHTS	SURFACE	LUMINII BARA SURFACE STATIC WHITE, CAT.#: BAR-70INCH-HE64LO-35K-F-FC-SA-LPE & PS-UNI-30W-24	120V	0-10V	11.0 W	1166 lm	3500 K	95	
L3b'	16" UNDER CABINET LIGHTS	SURFACE	LUMINII BARA SURFACE STATIC WHITE, CAT.#: BAR-16INCH-HE64LO-35K-F-FC-SA-LPE	120V	0-10V	3.0 W	300 lm	3500 K	95	
L4'	114" UNDER CABINET LIGHTS	SURFACE	LUMINII BARA SURFACE STATIC WHITE, CAT.#: BAR-114INCH-HE64LO-35K-F-FC-SA-LPE & PS-UNI-30W-24	120V	0-10V	18.0 W	1900 lm	3500 K	59	
L5'	48" UNDER CABINET LIGHTS	SURFACE	LUMINII BARA SURFACE STATIC WHITE, CAT.#: BAR-48INCH-HE64LO-35K-F-FC-SA-LPE & PS-UNI-30W-24	120V	0-10V	7.6 W	800 lm	3500 K	95	
D1	4" DOWNLIGHT LED FIXTURE	RECESSED, TRIMLESS	LUMENWERX, CAT.#: AE4RR-TLMP-SW-OF-NA-UNV-28W-D1-NA & AE4RPB-SW-28W-80DEG-2STP-90CRI-35K-TLMP-FTMW-TVMW-NA	120V	0-10V	28.0 W	2775 lm	3500 K	90+	

NOTES

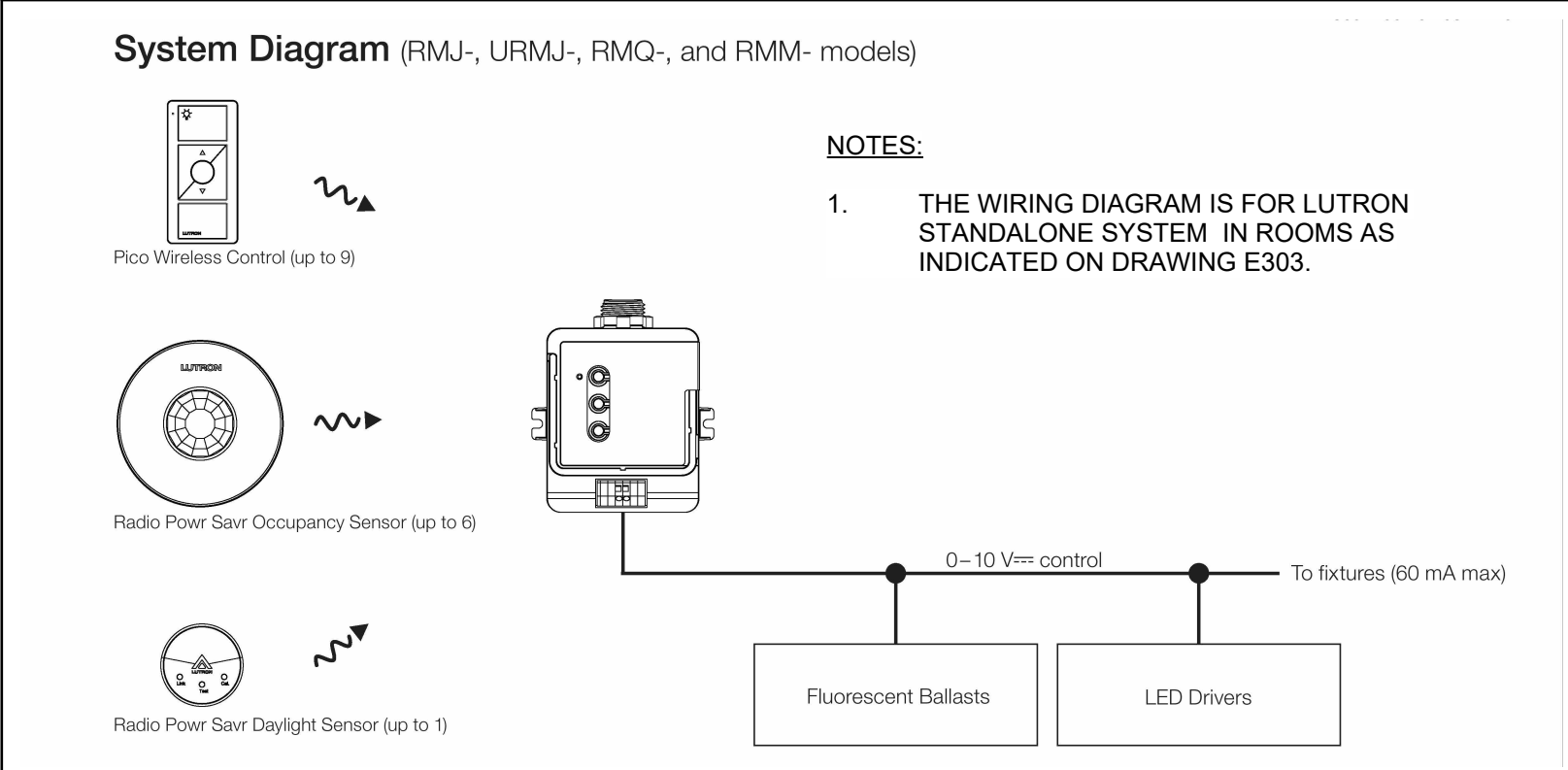
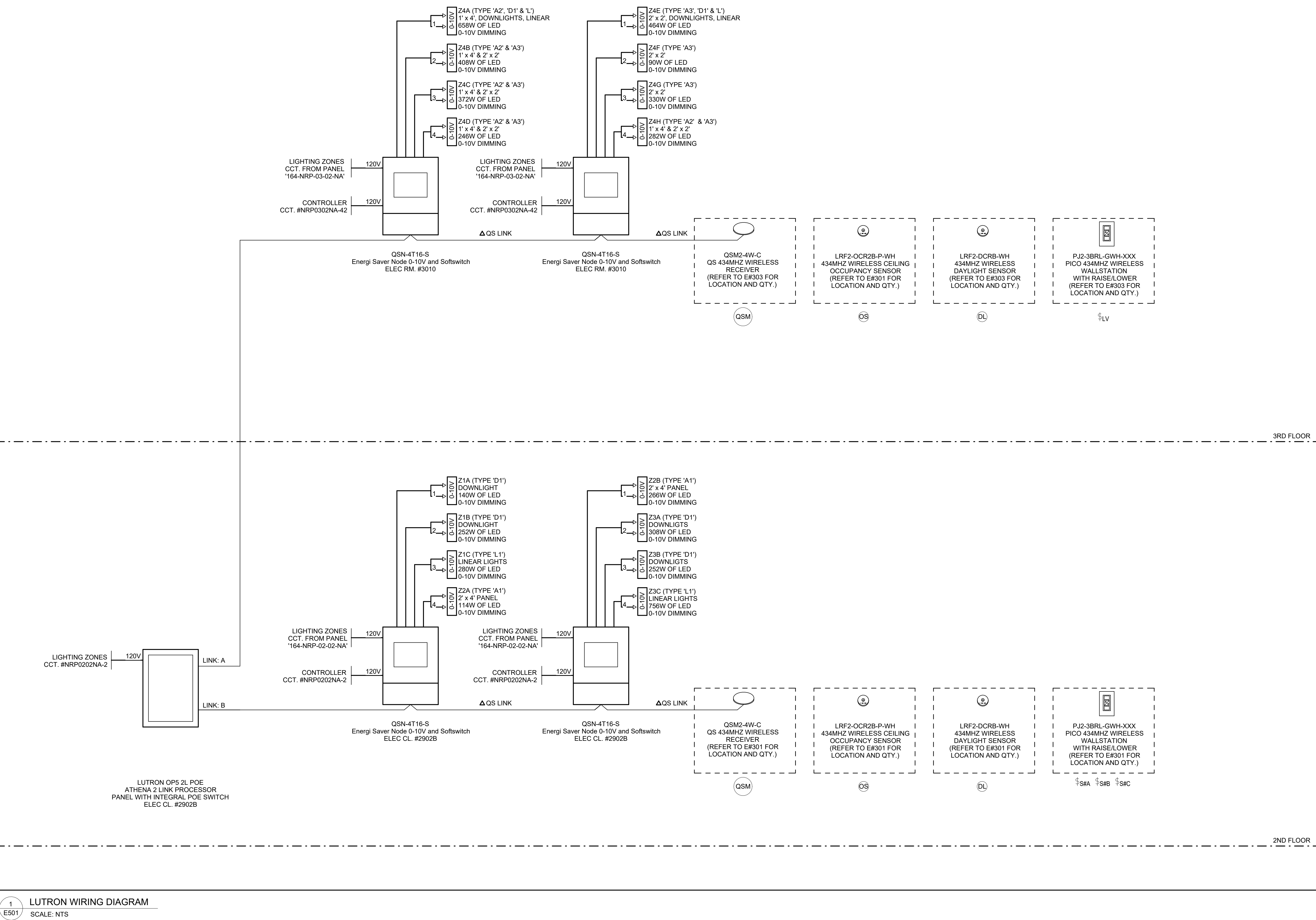
- THIS DETAIL IS DIAGRAMMATIC ONLY FOR LUTRON LIGHTING CONTROL SYSTEM. REFER TO PLANS FOR QUANTITY AND LOCATION OF ZONES AND DEVICES.
- PROVIDE FULLY FUNCTIONAL STANDALONE SYSTEM C/W WITH ALL DEVICES, WIRING, ACCESSORIES, PROGRAMMING, TESTING ETC.
- INSTALL ALL DEVICES AS PER MANUFACTURER'S RECOMMENDATIONS.
- ALL LOW VOLTAGE WIRING CABLING, AS NOTED ON THIS SCHEMATIC, SHALL BE INSTALLED INSIDE CONDUIT.
- DIMMING SYSTEM SHALL BE BASED ON LUTRON ATHENA DIMMING SYSTEM.
- ELECTRICAL CONTRACTOR SHALL CARRY LUTRON FOR COMMISSIONING, PROGRAMMING & TRAINING OF THE LIGHTING CONTROL SYSTEM IN BASE BID.
- WIRING DETAIL SHOWN TO BE CONFIRMED & COORDINATED WITH LUTRON.
- ELECTRICAL CONTRACTOR SHALL ALLOW FOR **ADDITIONAL TWO (2) VISITS** OF A LIGHTING CONTROL SPECIALIST AFTER OCCUPANCY IN ORDER TO PERFORM ANY ADJUSTMENTS OR REPROGRAMMING TO LIGHTING CONTROL SYSTEM TO FULFILL CLIENT'S REQUESTS IN BASE BID.

WIRE LEGEND

- QS CONTROL LINK (CONNECT WIRES 1, 2, 3, AND 4)'
- QS CONTROL LINK (CONNECT WIRES 1, 3, AND 4. DO NOT CONNECT WIRE 2)'
- TOTAL LENGTH OF QS LINK MUST NOT EXCEED 2000 FT. FOR CONTROL LINK LESS THAN 500 FT USE LUTRON CABLE GRX-CBL-346S OR GRX-PCBL-346S. OTHERWISE USE 2#18 AWG + 2#22 AWG. FOR LINK LENGTH BETWEEN 500 FT TO 2000 FT USE LUTRON CABLE GRX-CBL-46L OR GRX-PCBL-46L. OTHERWISE USE 2#12 AWG + 2#22 AWG.
- CONTACT CLOSURE SIGNAL 3 #18 AWG

LIGHTING CONTROL DEVICES LEGEND

- LUTRON WIRELESS 3-BUTTON PICO SWITCH WITH RAISE/LOWER, CAT. #PJ2-3BRL-GWH-L01
- LUTRON DUAL TECHNOLOGY LINE VOLTAGE OCCUPANCY SENSOR SWITCH, CAT. #MS-B102-WH (AUTO-OFF, MANUAL-ON)
- LUTRON LINE VOLTAGE OCCUPANCY SENSOR DIMMER SWITCH, CAT. #MS-Z101-WH (AUTO-OFF, MANUAL-ON)
- LUTRON WIRELESS CEILING MOUNTED OCCUPANCY SENSOR, CAT. #LRF2-OCR2B-P-WH
- LUTRON LOW VOLTAGE CEILING MOUNTED OCCUPANCY SENSOR WITH POWER PACK, CAT. #LOS-CDT-2000-WH & PP-LV
- LUTRON WIRELESS CEILING MOUNTED DAYLIGHT SENSOR, CAT. #LRF2-DCRB-WH
- LUTRON WIRELESS RECEIVER, CAT. #QSM2-4W-C



LUTRON STANDALONE LIGHTING CONTROL WIRING DIAGRAM  
SCALE: NTS

LUTRON WIRING DIAGRAM  
SCALE: NTS

ISSUED FOR TENDER	2016-04-22
ISSUED FOR BIDDING	2016-03-09
ISSUED FOR PERMIT	2016-02-27
ISSUED FOR CLASS A COSTING	2016-02-18
ISSUED FOR 100% CD	2016-01-23
ISSUED FOR CLASS B COSTING	2016-01-16
ISSUED FOR 50% CD	2015-11-28

REV.	DESCRIPTION	DATE
1	DESCRIPTION	DATE

PROJECT TITLE  
UNIVERSITY OF TORONTO  
**33 URSULA FRANKLIN  
MATH OFFICE  
RENOVATION**

33 Ursula Franklin Street  
DRAWING SHEET TITLE  
**LIGHTING CONTROL  
DETAILS & LUMINAIRE  
SCHEDULE**

DRAWN BY: GDP	SCALE: N/A
REVIEWED BY: JW	DATE CREATED: 2025-05-27
UNIVERSITY PROJECT NUMBER: NORTH POINT	
P164-24-165	
DRAWING NUMBER	REV. NUMBER
<b>E501</b>	